

## GASP Archives - Copyright 2024

### Marian Martin 9000 (1940's)

Private Collection: Evelyn Koprivnikar

1/2 PDF includes:

- Pattern image graphic
- One page instruction sheet printed both sides

2/2 PDF includes:

- Six unprinted pattern pieces

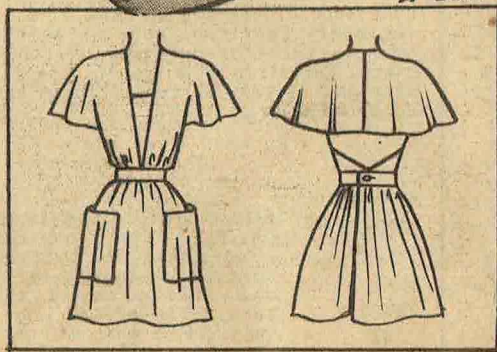
File is A0 but may print A4 with Adobe tiling/poster instructions for personal use with Adobe Illustrator / InkScape / Affinity Designer or similar. Not for resale.

# Marian Martin 9000 (1940's)

Size 12 Bust 30 Waist 25.5 Hip 33

GASP Archives/Private Collection: Evelyn Koprivnikar

9000



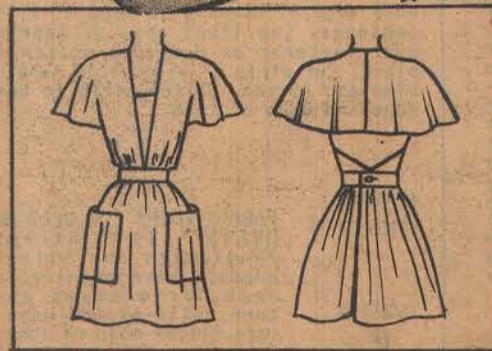
9000

SIZE

12



9000



9000 SIZE

12

MADE ONLY IN MISSES' SIZES 12, 14, 16, 18, 20, 40.

REQUIREMENTS FOR FABRICS WITHOUT NAP

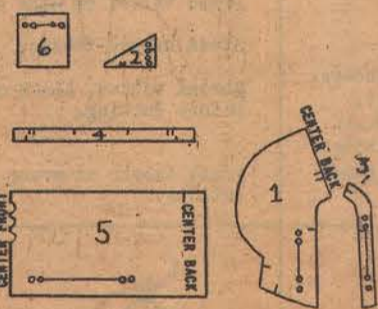
SIZES	----- BEACH WRAP -----	
	35" FABRIC	39" FABRIC
12	2-5/8 yds.	2-1/4 yds.
14	2-3/4 "	2-1/4 "
16	2-7/8 "	2-1/2 "
18	3 "	2-5/8 "
20	3-1/8 "	2-3/4 "
40	3-1/4 "	2-7/8 "

2" HEM ALLOWED ON LOWER EDGE OF WRAP.

PATTERN PARTS IDENTIFICATION GUIDE

CONSISTS OF 6 PARTS

- 1-Front
- 2-Back
- 3-Facing
- 4-Belt
- 5-Skirt
- 6-Pocket



PRINTED IN U.S.A.

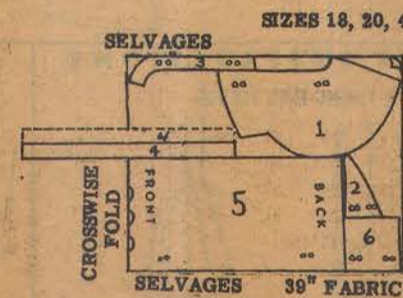
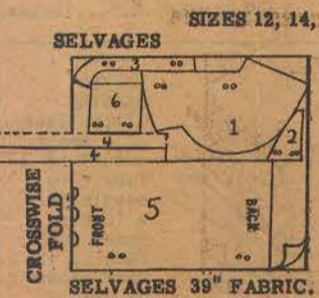
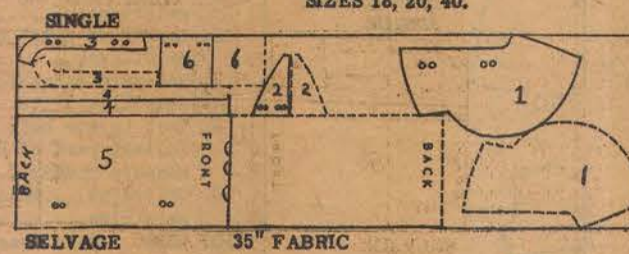
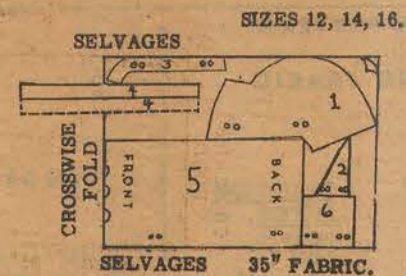
CUTTING INSTRUCTIONS

CUTTING INFORMATION

CUTTING GUIDES-When pattern is cut on single thickness of material place pattern parts on right side of fabric. When material is folded have right sides of fabric together. Place pattern parts as shown in black outlines REVERSE pattern parts for other half of garment or for duplicate pieces as indicated by BROKEN LINES-when necessary shift pattern parts where more or less space is needed. Pin parts securely to fabric before cutting. Mark each part of the garment exactly like pattern.

RIGHT HALF OF PATTERN IS GIVEN EXCEPT FOR PART 4. Cut two parts 4.

NOTE--When necessary, open fabric at fold and cut part 4 on single thickness of material.



STANDARD MEASUREMENTS - MISSES'

SIZES...	12	14	16	18	20	40
BUST....	30"	32"	34"	36"	38"	40"
WAIST....	25 1/2"	26 1/2"	28"	30"	32"	34"
HIPS....	33"	35"	37"	39"	41"	43"

NOTE - Hips 7" below waistline.

IMPORTANT: 1/2 - INCH SEAM ALLOWANCE

DRESSMAKING INSTRUCTIONS

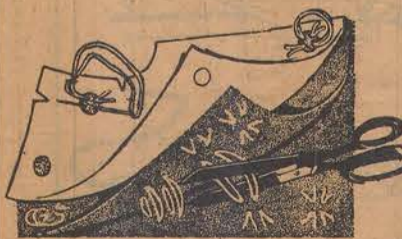
GENERAL INSTRUCTIONS

MARKS USED FOR CUTTING AND MAKING

- V Notch - to match in seams.
- oo Large and small perforations. Mark perforations on wrong side of fabric with tailor's tacks or chalk.
- ooo Indicates fold.
- oo Indicates straight grain of fabric; see cutting guides.

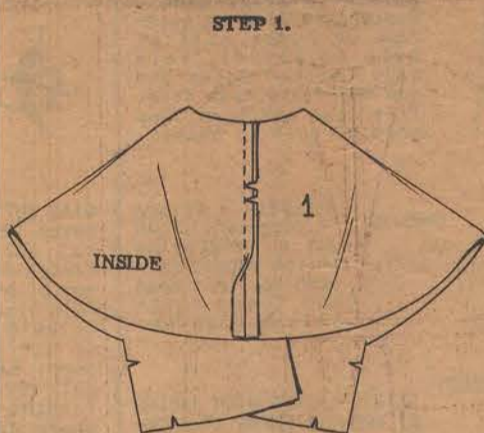
CONSTRUCTION

- BASTE-match corresponding notches. Adjust garment before stitching.
- STITCH-loosen or tighten tension on machine according to fabric.
- PRESS-all seams as stitched.
- FINISHING-refer to back of sheet for dressmaking aids.

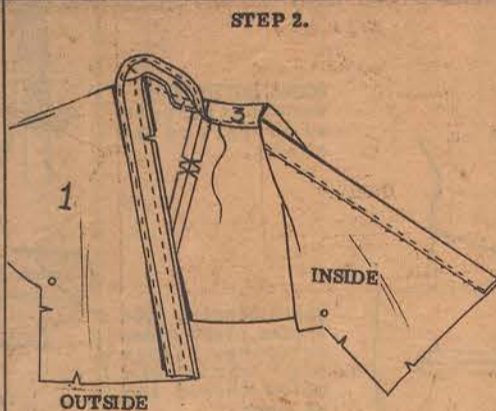


TAILORS' TACKS

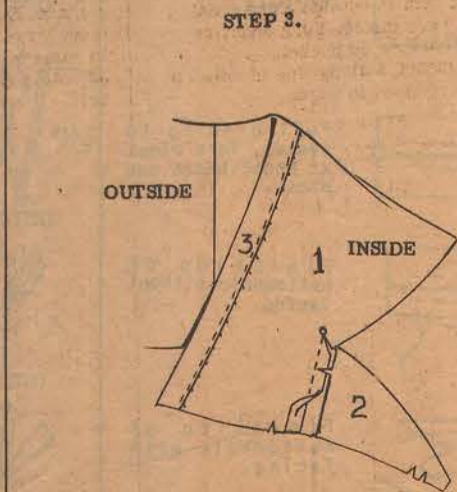
Mark perforations and notches using double thread, then remove pattern. Separate material, cut tacks. (notches may be clipped).



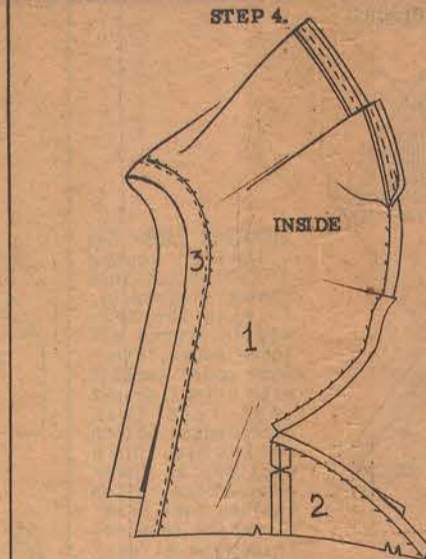
STEP 1. WRAP - Seam FRONT 1 at center back matching vv. Seam FRONT FACING 3 at center back matching v. Turn under and stitch outer edge. Seam facing to neck and front edges of wrap matching v. Trim seam, clip curve.



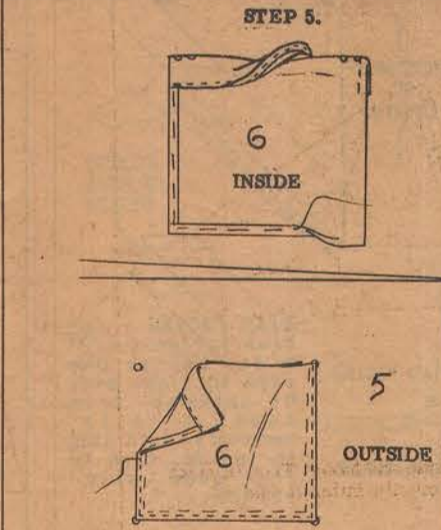
STEP 2. Turn facing to inside and baste. Tack in place where necessary or slip-stitch if desired.



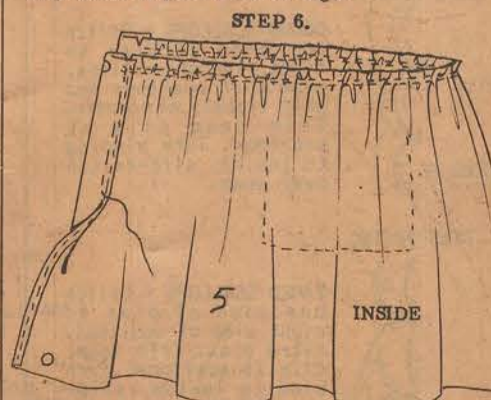
STEP 3. Seam BACK 2 to front at side below small o matching v. Clip front corner to small o and press seam open.



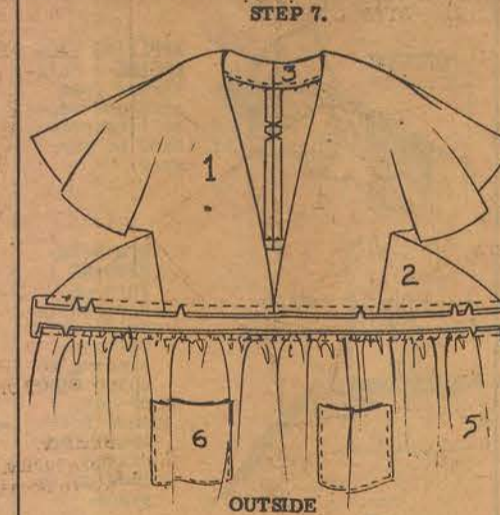
STEP 4. Finish entire outer unnotched edge of back and front with a bias facing cut 1-1/2" wide, piecing bias as necessary. Or finish with a narrow hand hem. Gather lower edge of front between center front edge and v, on seam line and 1/4" below.



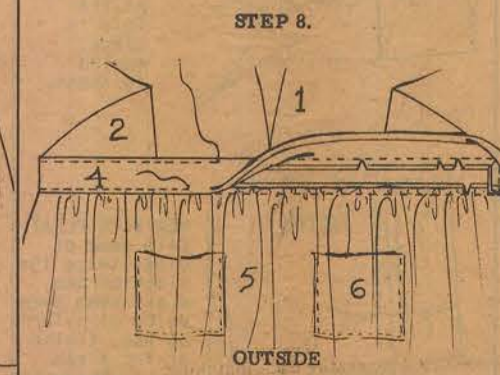
STEP 5. Turn under and stitch raw edge of top of POCKET 6. Fold hem to outside along small o and stitch ends. Turn inside. Turn under remaining seam allowance on pocket. Place pocket on SKIRT 5 along line of small o. Top-stitch in place close to edge.



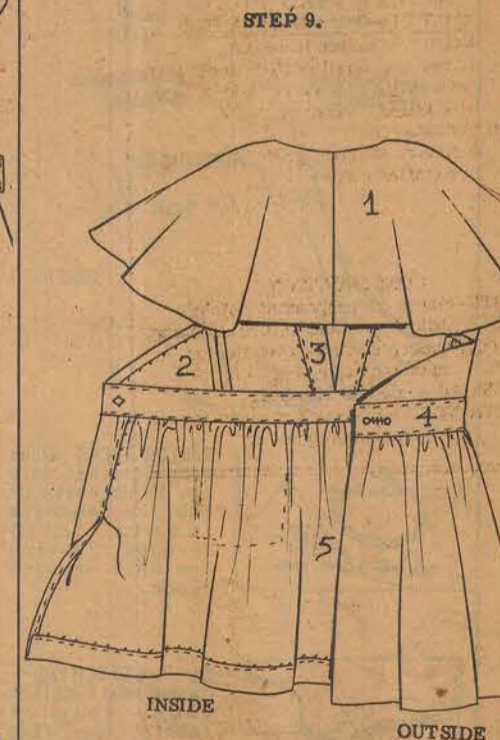
STEP 6. Turn under and stitch raw edge of back hem. Fold to inside along large O and baste. Gather upper edge of skirt between v-v on seam line and 1/4" below.



STEP 7. Seam outside of inset BELT 4 facing to inside of upper front and back matching vv-v, adjusting gathers, front edges of top meeting at center front large O of belt. Seam belt facing to skirt in same manner matching v-v and center front, adjusting gathers evenly. Press seams toward belt.



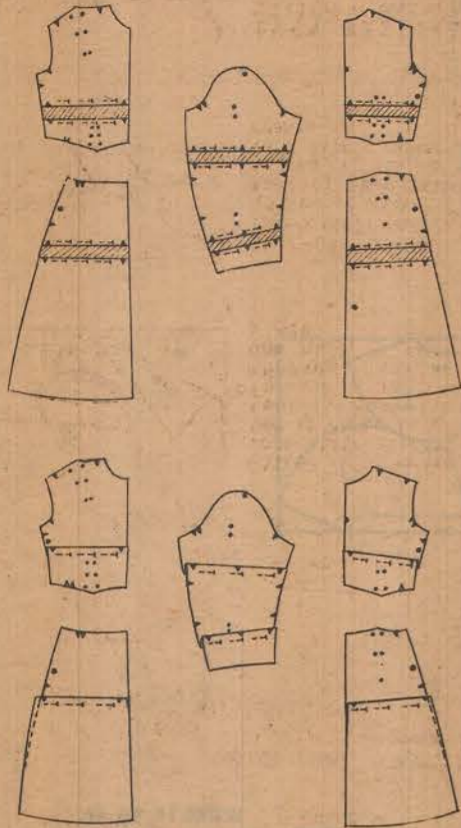
STEP 8. Seam inset belt to belt facing at ends and lower edge of bodice. Turn under seam allowance on lower edges of belt and baste along skirt seam. Top-stitch along seams.



STEP 9. Turn up 2" hem at lower edge pulling out back hem. Turn under and stitch raw edge of hem and slip-stitch in place. Slip-stitch back hem over lower hem. Work buttonhole between small o-o on right end of belt. Sew button to o on left end.

**MAKE ADJUSTMENTS IN PATTERN**

**PARTS BEFORE CUTTING FABRIC**



**TO LENGTHEN PATTERN**, cut pattern thru  $\diamond$  perforations, setting in pieces of paper sufficient width to give desired length.

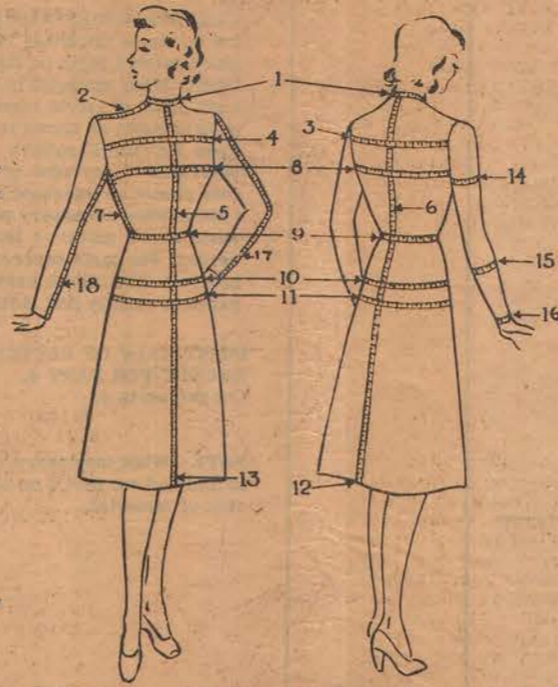
**TO SHORTEN PATTERN**, fold pattern on  $\diamond$  perforations. Reshape sides as shown.

**PRACTICAL DRESSMAKING HINTS**

**HOW TO TAKE**

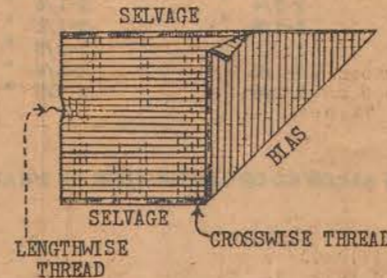
**INDIVIDUAL MEASUREMENTS**

1. Neck...measure around base of neck.....inches.
2. Shoulder...from neck to shoulder bone.....inches.
3. Width across back.....4" below base of neck.....inches.
4. Width across chest.....3" below base of neck.....inches.
5. Length of waist front...from neck to natural waistline.....inches.
6. Length of waist back...from neck to natural waistline.....inches.
7. Underarm length...from armhole to natural waistline.....inches.
8. Bust (place both hands on hips)...measure around fullest part of bust, 1" below armholes. Do not measure snugly.....inches.
9. Waistline...measure around natural waistline.....inches.
10. Hips...take measurement 7" below waistline.....inches.
11. Largest part of hips...take measurement 10" below natural waistline.....inches.
12. Back skirt length...measure at center back from natural waistline to desired length.....inches.
13. Front skirt length...measure at center front from natural waistline to desired length.....inches.
14. Upper arm...measure the fullest part of arm... 1" below armhole.....inches.
15. Lower arm...measure 5" above wrist. Allow for ease.....inches.
16. Wrist...measure around wrist.....inches.
17. Outside sleeve length...with arm bent, measure from top of shoulder to elbow... then to wrist...(see chart).....inches.
18. Inside sleeve length...measure from seam at armhole to wrist.....inches.



**GRAINS OF FABRIC**

Lengthwise grain refers to the threads parallel to selvage edges. Crossgrain is from selvage to selvage.



Use a heavy press cloth for silk, rayon and woolen.

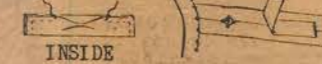
Dampen cloth slightly with a sponge.

Press velvet on wire board.

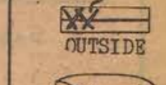
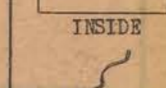
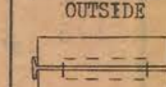
Steam napped fabric.

Shrink cotton, linen or woolen fabric before cutting.

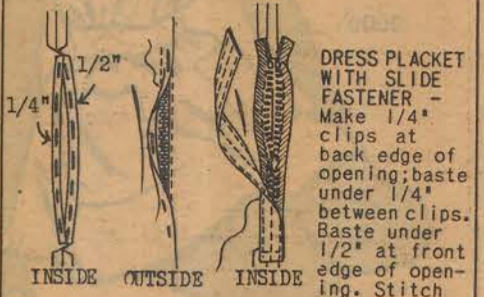
Press fabric on wrong side before cutting.



**LINGERIE HOLDERS**-Fold strips of fabric lengthwise and stitch edges; leave opening in each. Trim seams and turn; slip-stitch openings. Sew one end of each strip to shoulder seam, with free end toward neck. Fasten free end of holder in place to shoulder seam with snap.



**BOUND POCKETS**-Baste thru pocket perforations on garment. Baste strip for binding over pocket perforations. Stitch  $1/8$ " above and below basting and across ends. Slash between stitching and diagonally at corners. Pull binding to inside; baste. Catch-stitch edges of binding together. Stitch shorter pocket section to lower edge of binding. Baste under  $1/2$ " at lower edge of strip for upper pocket facing; stitch to pocket, basting ends and upper edge in place. Stitch larger pocket section to binding and to edges of shorter pocket.



**DRESS PLACKET WITH SLIDE FASTENER**- Make  $1/4$ " clips at back edge of opening; baste under  $1/4$ " between clips. Baste under  $1/2$ " at front edge of opening. Stitch back edge of opening to tape of slide fastener. Lap front edge of opening over fastener on outside; stitch in place. Cut strip 2" wide, fold lengthwise and stitch. Stitch strip to back edge and ends of tape.

**FABRIC LOOPS FOR BELT ON DRESS**- Fold strips lengthwise and stitch edges; leave opening in each. Trim seams and turn; slip-stitch openings. Stitch ends of loops to sides of dress at waistline.

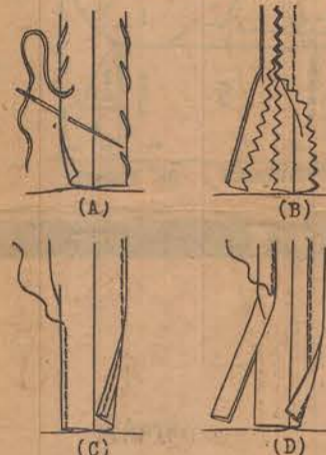
**EYELET**- Pierce at perforation. Work buttonhole stitch.

**THREAD LOOP**- Make buttonhole stitch over three threads.

**BIAS BUTTON LOOPS**- Cut bias strips to cover length of desired button loops; cut cord and string same length. Fasten ends of string and cord to one end of bias strip on outside (view A). Fold bias strip over string and stitch (view B). Pull string from inside of strip, working bias strip over cord; keep seam straight (view C). Cut corded bias strip into equal lengths and form loops for buttons where desired (view D).

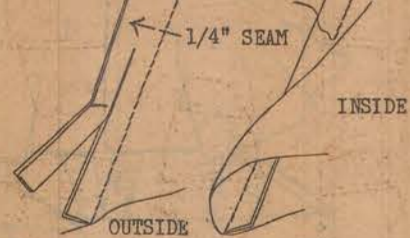
**DETAIL INSTRUCTIONS**

**SEAM FINISHINGS**



A-Overcast B-Pinked C-Stitched D-Bound

**FRENCH SEAM**



**TAILOR TACKS**-Make loop stitches thru two thicknesses of fabric. Separate fabric, clip threads, leaving one half in each piece.

**SLIP-STITCHING**- Take a small stitch under fold of fabric, then take a small stitch thru fabric underneath.

**EVEN BASTING STITCH**- Before pulling thread, take 3 or 4 even stitches on needle.

**UNEVEN BASTING STITCH**-Take up a small amount of fabric on needle, skip a longer space and take up the same amount on needle as first stitch.

**APPLYING LACE EDGING**- Pull thread from straight edge of lace; overhand to garment.

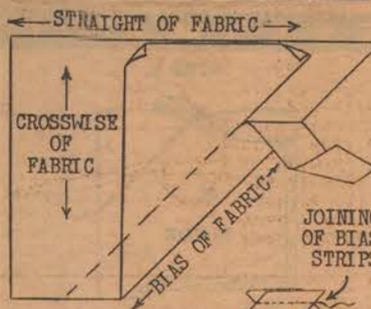
**HEM WITH BINDING**- Turn up hem; baste fold. Stitch binding to upper edge of hem, ease fullness. Slip-stitch binding in place.

**PLAIN HEM**- Turn up hem and baste, turn in free edge, slip-stitch fold in place, easing fullness.

**HEM WITH PLEAT**- Clip seam of pleat, twice the width of hem, press seam open below clip. Turn up hem, finish as for plain hem or hem with binding.

**HAND ROLLED HEM**-Make row of machine-stitching at edge to be hemmed. Trim seam. Roll under edge with stitching and slip-stitch fold in place.

**CUTTING AND JOINING BIAS STRIPS**



**BIAS FACING**

**BIAS FACING**

**BIAS BINDING**

**BIAS FACING**

**BIAS FACING**

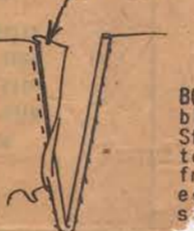
**BIAS FACING**- Cut bias facing  $1-1/2$ " wide. Stitch one edge to right side of garment, trim seam, clip if necessary. Turn bias to inside, turn in, free edge; slip-stitch.

**MITRED CORNER**-Stitch one edge of bias to right side of fabric. Clip bias at corner and mitre. Trim seam, turn bias to inside, slip-stitch.

**BOUND SCALLOPS**- Stitch one edge of bias to right side of scallops, ease over scallops and pull tightly at corners. Trim seam clip at scallops. Turn binding to inside, slip-stitch over seam.

**FACED SCALLOPS**- Stitch one edge of bias to right side of scallops, mitre bias. Trim seam, clip at scallops. Turn bias to inside, slip-stitch.

**BINDING**



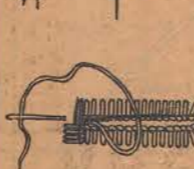
**BOUND NECK OPENING**- Cut bias binding  $3/4$ " wide. Stitch one edge of bias to slash, stitch  $1/8$ " from edge. Turn in free edge of bias, slip-stitch.

**SHOULDER PADS**



**SHOULDER PADS**- Cut a  $10-1/2$ " square of fabric, cut thru center diagonally, forming two triangles, round off lower edges. Interface upper section with crinoline, cut  $1/2$ " less than outer edges. Stitch on inside. Join sections at lower edges. Place cotton batting over crinoline the required thickness at center, thin out at ends. Bind sections of pads together.

**TAILORED BUTTONHOLE**



**TAILORED BUTTONHOLE**- Slash thru buttonhole perforations; overcast edges together. Front end may be pierced with stillnetto. Work buttonhole stitch over edges, working over strand of twist; work fanwise at front end and bar at outer end.

**BOUND BUTTONHOLE**- Mark buttonhole with thread or chalk.

Baste binding over thread, right sides matching. Stitch  $1/8$ " above and below thread and at ends.

Slash thru center to  $1/8$ " from ends and diagonally at corners.

Pull binding to inside, form pleat at ends; baste and press.

Finishing of buttonhole without facing.

Finishing of buttonhole with facing.

**PLAIN BELT WITH BUCKLE**- (Piece if necessary). Fold strip lengthwise and stitch edges and one end. Trim seam and turn. Sew ends of belt to buckle.

**BELT WITH STIFFENING**- Baste crinoline or buckram to lower half of belt on inside. Fold belt, stitch edges and one end leave ends free. Trim seam and turn. Sew ends of belt to buckle.

**TIE-BELT**- (Piece if necessary). Fold strip lengthwise and stitch edges; leave opening. Trim seam and turn; slip-stitch opening.

**SKIRT PLACKET WITH FACING AT FRONT, BINDING AT BACK**- Clip at lower edge of opening. Face front edge with strip of fabric cut  $1-3/4$ " wide. Bind back of opening with strip of fabric cut  $2-1/2$ " wide. Lap binding over facing on inside; stitch lower ends together.

**SKIRT PLACKET WITH SLIDE FASTENER**- Make a  $1/4$ " clip at back edge of opening above seam; baste under  $1/4$ " above clip. Baste under  $1/2$ " at front edge of opening. Stitch back edge of opening to tape of slide fastener, upper end of fastener.  $1/2$ " from upper edge of opening. Lap front edge of opening over fastener on outside; stitch in place. Cut strip 2" wide, fold lengthwise and stitch. Stitch to back edge and lower end of opening.

