



GASP Archives - Copyright 2024

Pictorial Review 9391 (1930's) Bust 32 Waist N/A Hip 35

Pattern is complete.

1 of 2 - PDF file contains:

- Envelope front/back
- One page instruction sheet printed both sides

2 of 2 - PDF file contains:

- Nine printed pieces.

PDF contains two files 1/2: Instructions 2/2: Pieces . PDF is A0 format but may print A4 with Adobe tiling/poster instructions for personal use with Adobe Illustrator/InkScape/Affinity Designer or similar. Not for resale.

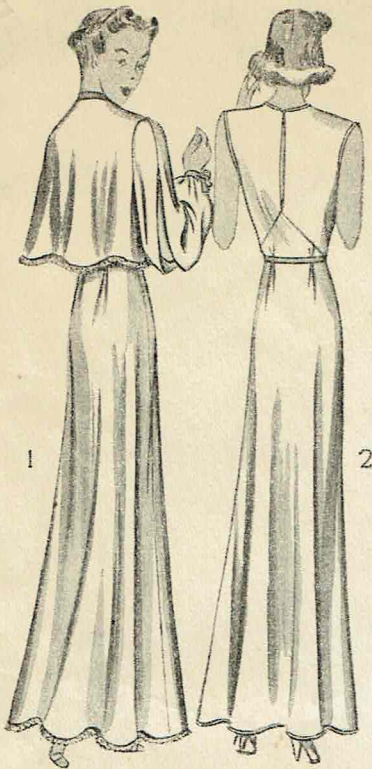
PICTORIAL \* REVIEW \* PRINTED \* PATTERN



9391

GASP Archives - 1930's

Patterns and methods of making them are patented as follows: U. S. A., Sept. 22, 1925; U. S. A., Nov. 10, 1925; U. S. A., No. 1,812,953, July 7, 1931; Canada, Aug. 18, 1925; Gt. Brit., No. 245,493; France, No. 589,039; Australia, No. 20,340; Germany, Nov. 9, 1927, No. 451,279. Other patents pending. Printed in U. S. A.



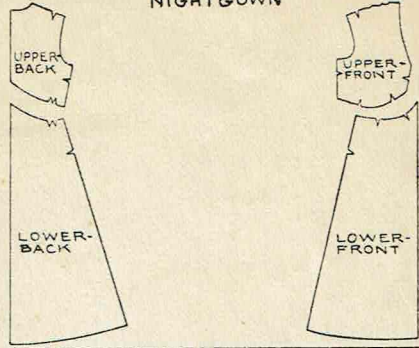
9391

WOMEN'S NIGHTGOWN AND BED-JACKET

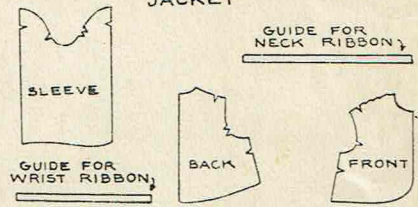
So utterly feminine and lovely is this ensemble that you will be tempted to wear it out dancing. Lace or binding may edge the dainty bed-jacket and nightgown. Ribbon trims the neck and long sleeves of the jacket and is suggested for the flowing tie-belt.

9 PIECES

NIGHTGOWN



JACKET



9391

MATERIAL REQUIRED	Sizes	32	34	36	38	40	42	44	46	
<b>View 1—Jacket and nightgown</b>										
35" without nap .....		4 1/2	4 3/4	4 7/8	5	5 1/8	5 1/4	5 1/2	5 5/8	yds.
39" without nap .....		4 7/8	4 3/8	4 5/8	4 3/4	4 7/8	5	5	5 1/4	yds.
Lace edging to trim .....		8	8 1/4	8 1/2	8 5/8	8 3/4	9	9 1/8	9 1/4	yds.
1" ribbon for neck, sleeves and tie-belt .....		7 1/2	7 5/8	7 5/8	7 3/4	7 3/4	7 3/4	7 7/8	7 7/8	yds.
<b>View 2—Nightgown</b>										
35" without nap .....		3 1/4	3 3/8	3 1/2	3 5/8	3 5/8	3 3/4	3 3/4	3 7/8	yds.
39" without nap .....		3	3 1/8	3 1/4	3 3/8	3 1/2	3 1/2	3 5/8	3 3/4	yds.
1" ribbon for tie-belt .....		3 1/2	3 1/2	3 1/2	3 1/2	3 1/2	3 1/2	3 1/2	3 1/2	yds.
<b>Jacket</b>										
39" without nap .....		1 5/8	1 3/4	1 7/8	1 7/8	2	2	2	2	yds.
1" ribbon for neck and sleeves .....		4	4 1/4	4 1/4	4 1/4	4 1/4	4 1/4	4 3/8	4 3/8	yds.
<b>CORRESPONDING MEASUREMENTS</b>										
Bust .....		32	34	36	38	40	42	44	46	ins.
Hip (7" below natural waistline) .....		35	37	39	41	43	45	47	50	ins.
Finished back length of nightgown from base of neck—no hem .....		55	55	56	56	57	57	57	57	ins.
Width of nightgown about .....		2	2	2 1/4	2 1/4	2 1/4	2 1/4	2 1/4	2 3/8	yds.
NOTE—Additional material is required for fabrics that are not pre-shrunk and for extra seam allowance on fabrics that ravel.										

SUITABLE MATERIALS

- Crepe de chine
- Crepe satin
- Triple sheers
- Flat crepe
- Chiffon, voile
- Lingerie silk
- Printed dimity
- Printed batiste
- Sheer cottons

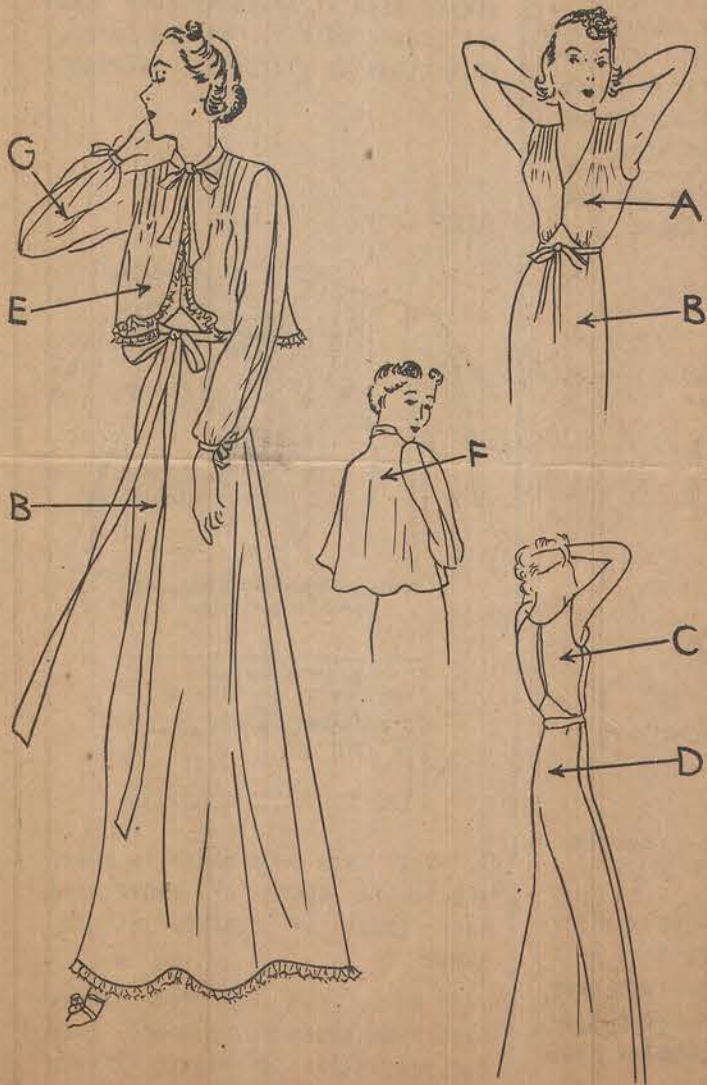
Rayon, Bemberg or other synthetic fabrics

PICTORIAL REVIEW PATTERN COMPANY, INC.  
 PARIS NEW YORK LONDON  
 Trade Mark Reg. in U. S. Pat. Off. and in Can. Printed in U. S. A.

GASP Archives - 1930's

# The New Pictograf

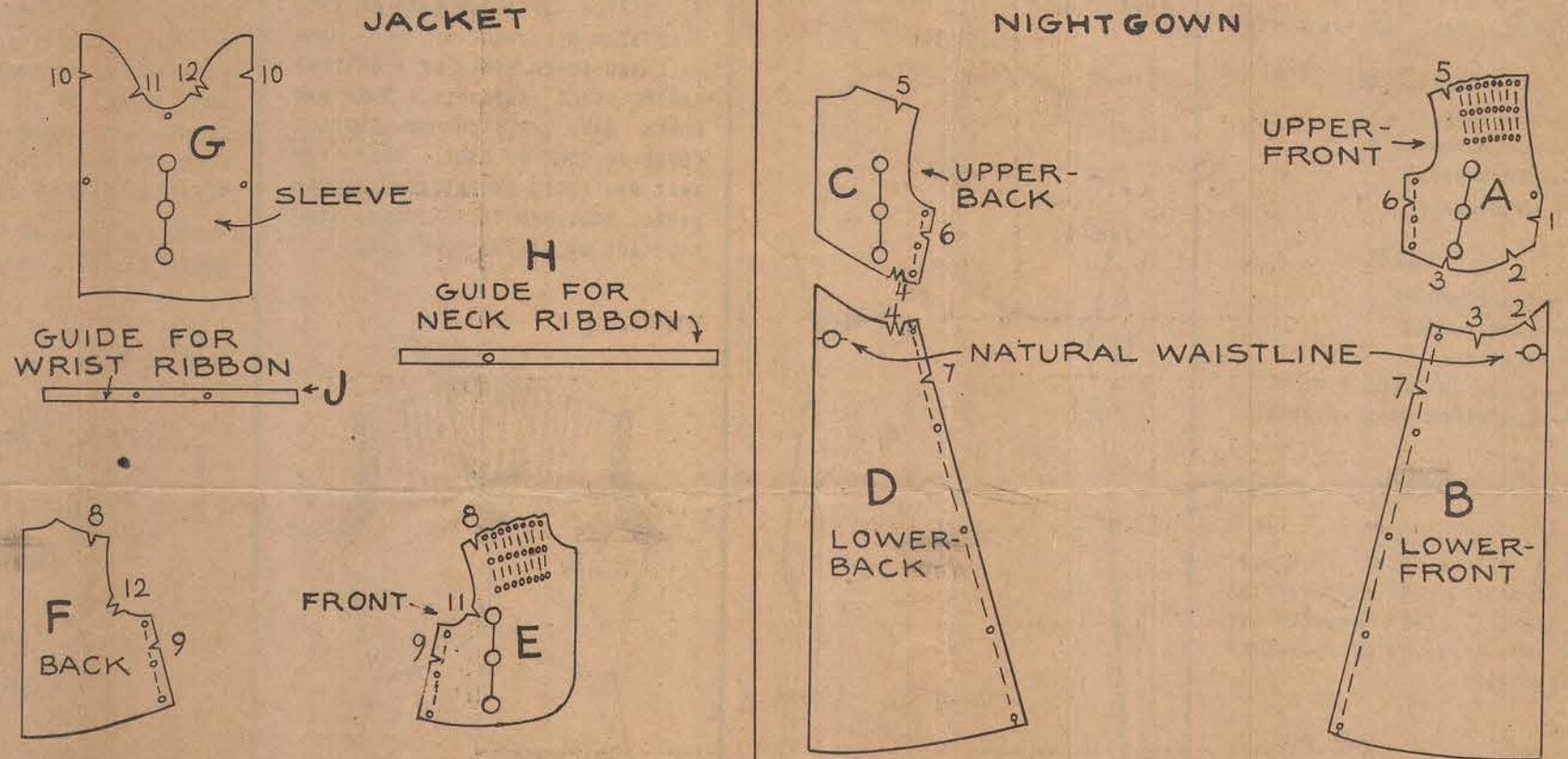
THE PERFECT SEWING GUIDE ITS GUARANTEED  
Trade-Mark Reg. U.S. Pat. Off. Patent Pending.



9391

SIZE 32

## CONSTRUCTION GUIDE

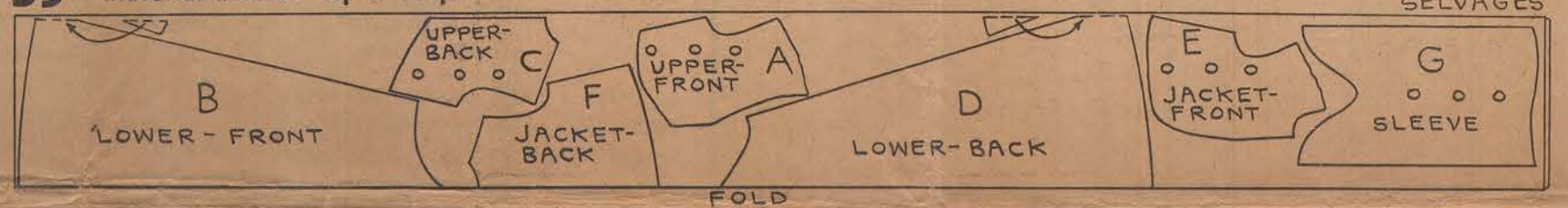


CUTTING GUIDE SIZE 32

9391

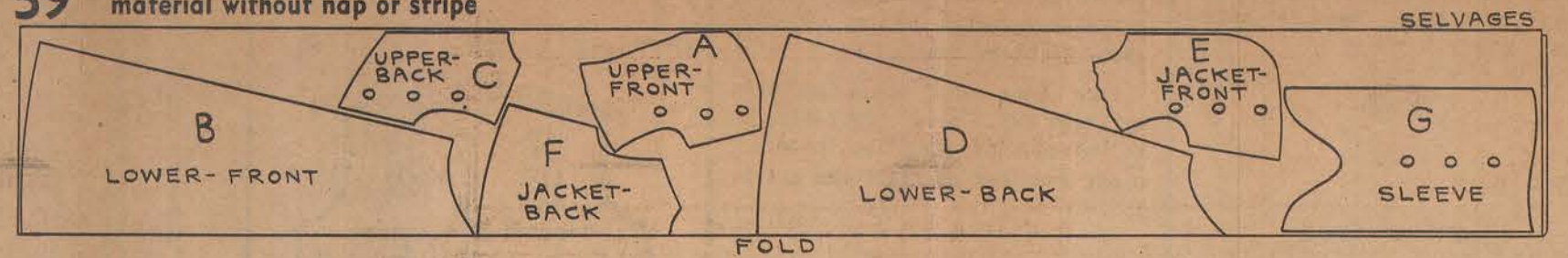
VIEW 1 Jacket and Nightgown

35" material without nap or stripe



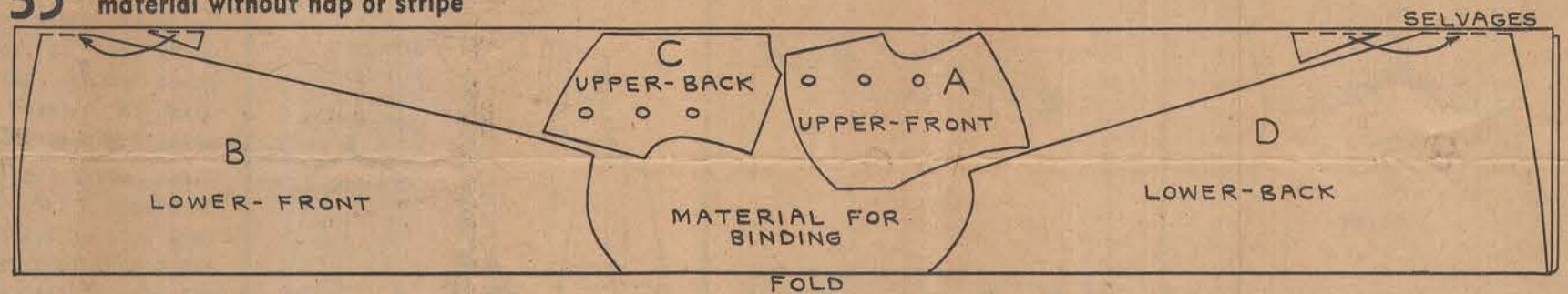
VIEW 1 Jacket and Nightgown

39" material without nap or stripe



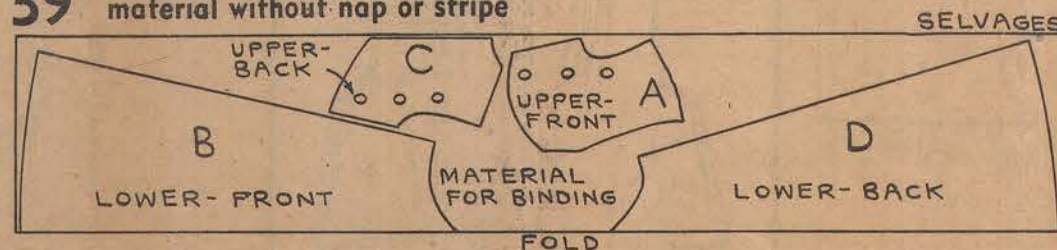
VIEW 2 Nightgown

35" material without nap or stripe



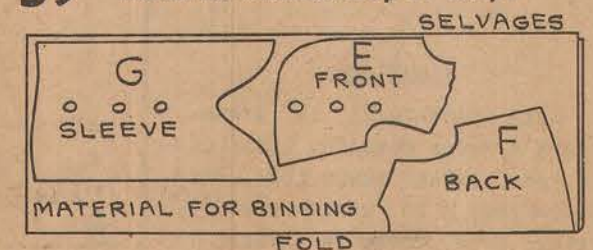
VIEW 2 Nightgown

39" material without nap or stripe



Jacket

39" material without nap or stripe



### IMPORTANT — SEAM ALLOWANCE

$\frac{3}{4}$  inch allowed on underarm seams indicated by small perforations.  $\frac{1}{2}$  inch allowed on all other seams.

The exact size of perforations used:

small ● medium ● large ●

NOTE — All fabrics sag when cut bias. Hems should not be turned, nor seams permanently stitched until after the garment has been hanging at least twenty-four hours. If seams draw, open and adjust until they hang smoothly, rebaste. Before stitching, lengthen stitch and loosen tension.

### CUTTING INSTRUCTIONS

1. Woolens and washable materials should be shrunk before cutting.
2. Before cutting material, press pattern pieces, pin together, test, and make necessary adjustments in pattern.
3. Press fold out of material. Straighten by tearing across one end, or by drawing a thread. Lay material smoothly on a flat surface; place the pattern pieces on material as illustrated in Cutting Guide and pin securely.
4. When cutting single thickness, place material right side up. Broken lines on Cutting Guide represent the other half of pattern which MUST BE REVERSED.
5. Mark notches and perforations with tailors' chalk or thread.
6. If piecing is necessary, allow for seams.

View 1, use all pieces.

View 2, use all pieces except E, F, G, H and J.

Lengthening or shortening line is indicated on sleeve pattern; cut or fold pattern on this line. Lengthen or shorten nightgown at lower edge.

Guides H and J are used for width and length of ribbon, cut neck ribbon twice the length of guide H.

9 PIECES. HALF PATTERN GIVEN

**NIGHTGOWN**

- A—UPPER-FRONT
- B—LOWER-FRONT
- C—UPPER-BACK
- D—LOWER-BACK

**JACKET**

- E—JACKET-FRONT
- F—JACKET-BACK
- G—SLEEVE
- H—GUIDE FOR NECK RIBBON
- J—GUIDE FOR WRIST RIBBON

**Note** - BASTE GARMENT TOGETHER, TRY ON, MAKING SURE THAT FITTING IS CORRECT. THEN PROCEED TO MAKE AS SHOWN IN STEP-BY-STEP INSTRUCTIONS.

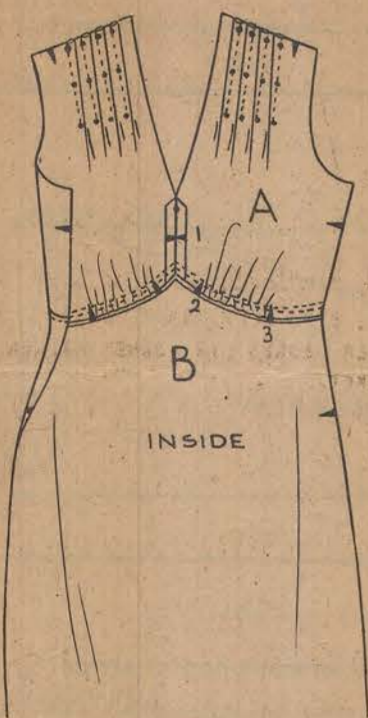
**NOTE** - TO PREVENT STRETCHING, MACHINE STITCH ALONG BIAS AND CURVED EDGES.

**FRENCH SEAM**



MAKE FRENCH SEAMS WHEN MADE OF LIGHT-WEIGHT FABRIC. TO MAKE FRENCH SEAMS, STITCH ON RIGHT SIDE, TRIM SEAM, TURN TO WRONG SIDE, STITCH.

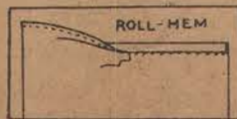
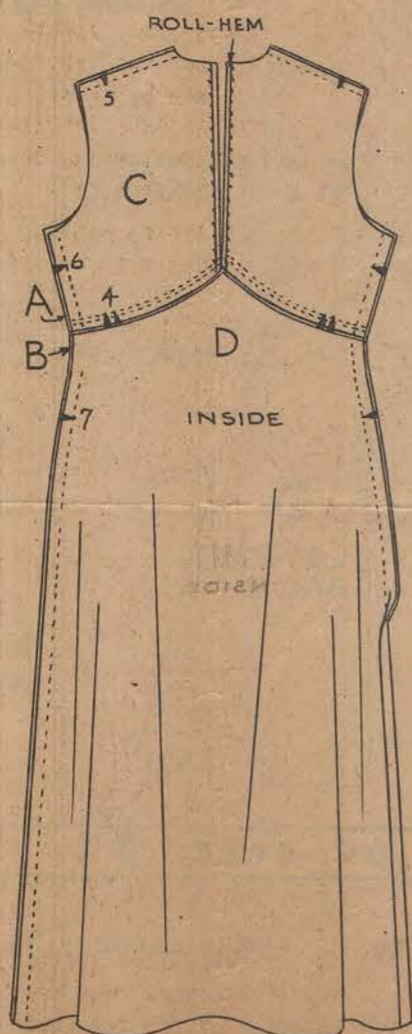
**STEP - 1**



**NIGHTGOWN**

1. MAKE DART-TUCKS IN UPPER-FRONT A, PRESS FORWARD. CLOSE CENTER SEAM. GATHER LOWER EDGE. SEAM LOWER-FRONT B TO UPPER-FRONT A, CENTERS EVEN, DRAW IN GATHERS TO FIT. PRESS SEAM DOWN, STITCH ON OUTSIDE.

**STEP - 2**

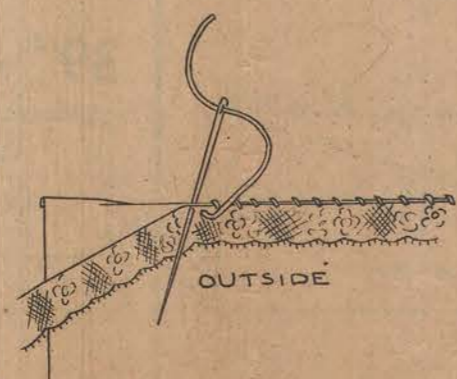
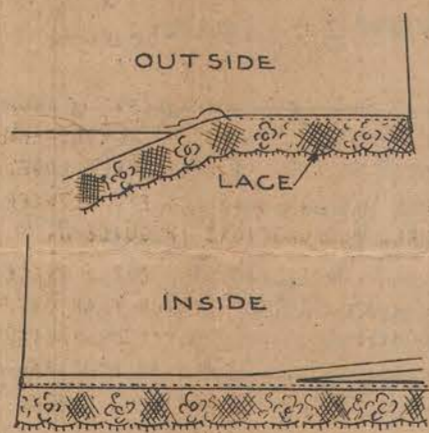


2. ROLL-HEM BACK EDGES OF UPPER-BACKS C.

MACHINE-STITCH EDGE BEFORE ROLLING; CUT MATERIAL CLOSE TO STITCHING. ROLL EDGE TOWARD YOU AND UNDER. SLIDE NEEDLE ALONG IN ROLL, CATCHING A THREAD OF THE OUTSIDE ABOUT 1/8 INCH APART.

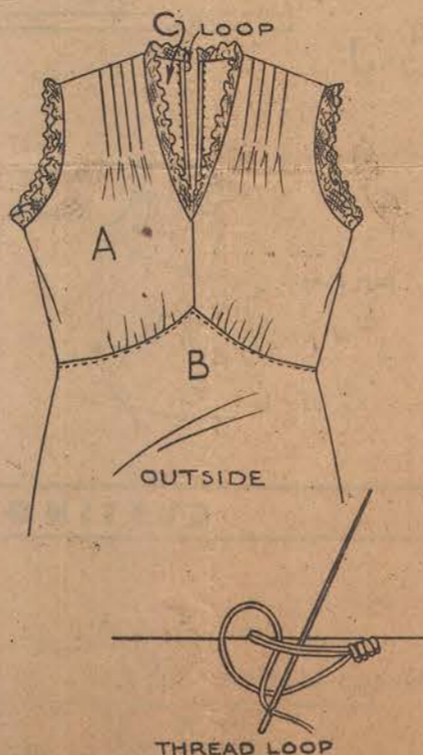
TACK BACK EDGES OF C TOGETHER AT LOWER END. SEAM LOWER-BACK D TO UPPER-BACK SAME AS FRONTS. CLOSE SHOULDER AND UNDERARM SEAMS.

**STEP - 3**



3. STITCH STRAIGHT EDGE OF LACE OVER SEAM ALLOWANCE AT NECK, ARM-HOLE AND LOWER EDGES OF NIGHTGOWN. EASING LACE SLIGHTLY, TURN RAW EDGES BACK, STITCH ON OUTSIDE CLOSE TO EDGE OF LACE; THEN TRIM AWAY RAW EDGES UNDERNEATH. IF DESIRED, ROLL-HEM THESE EDGES, SEWING LACE ON AT THE SAME TIME.

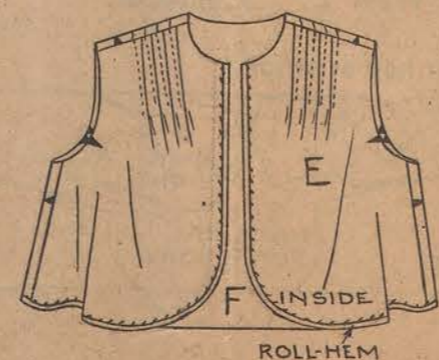
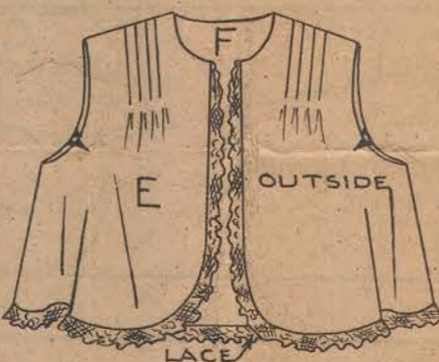
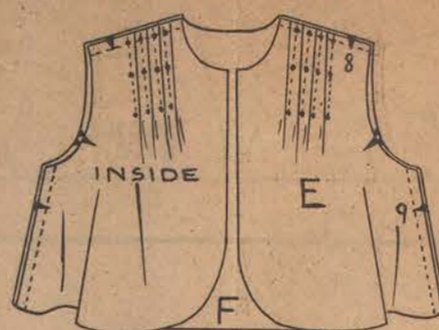
**STEP - 4**



4. MAKE A THREAD LOOP (AT RIGHT BACK EDGE) WITH SEVERAL THREADS TO FIT OVER BUTTON, COVER WITH BUTTONHOLE-STITCH, USE EYE OF NEEDLE FOREMOST. SEW BUTTON TO LEFT BACK.

USE A RIBBON TIE-BELT 3 1/2 YARDS LONG, TIE IN FRONT.

**STEP - 5**

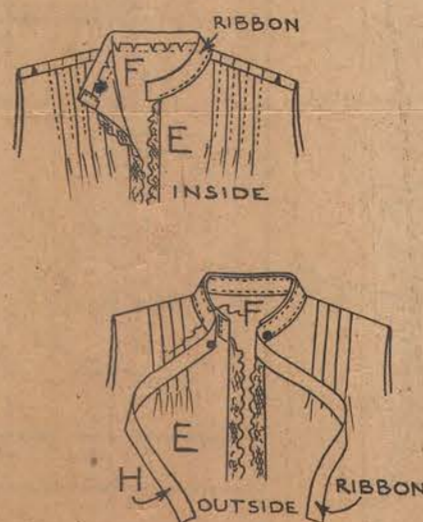


**JACKET**

5. MAKE DART-TUCKS IN JACKET-FRONT E. CLOSE SHOULDER AND UNDER-ARM SEAMS OF E AND F. FINISH FRONT AND LOWER EDGES SAME AS EDGES OF NIGHTGOWN, GATHERING OR PLEATING ENDS OF LACE AT NECK.

THE LACE MAY BE OMITTED AND THE EDGES OF JACKET ROLL-HEMMED.

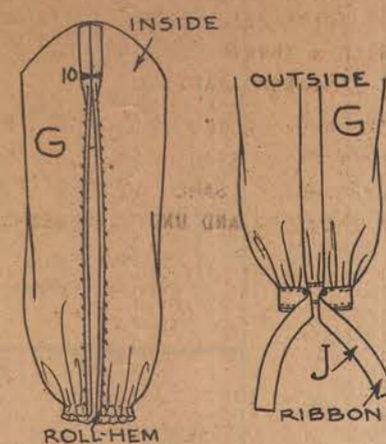
**STEP - 6**



6. FOR NECK FACING, CUT A PIECE OF RIBBON 1 INCH LONGER THAN NECK EDGE OF JACKET, STITCH THE LOWER EDGE OVER NECK SEAM ON WRONG SIDE, CLIPPING NECK SEAM. TURN THE ENDS OVER ON OUTSIDE AND STITCH.

STITCH LOWER EDGE OF NECK RIBBON OVER NECK SEAM ON OUTSIDE, CENTER-BACKS EVEN. STITCH UPPER EDGES OF RIBBON TOGETHER.

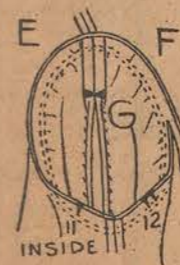
**STEP - 7**



7. CLOSE SEAM OF SLEEVE G FROM UPPER EDGE TO NOTCH. ROLL-HEM EDGES BELOW. GATHER LOWER EDGE, DRAW IN GATHERS TO FIT BETWEEN SMALL PERFORATIONS IN GUIDE J.

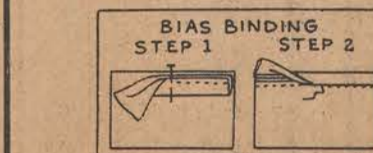
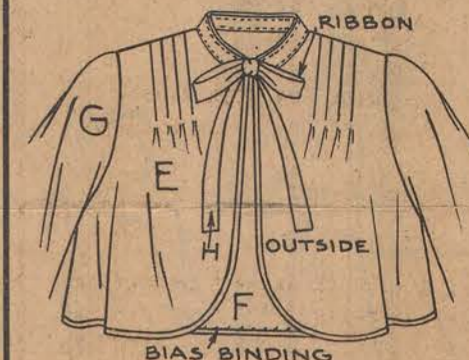
FOR WRIST FACING, CUT A PIECE OF RIBBON 1 INCH LONGER THAN GATHERED EDGE OF SLEEVE, STITCH FACING AND RIBBON TO SLEEVE IN SAME MANNER AS DESCRIBED FOR NECK RIBBON, BRINGING SMALL PERFORATIONS TO HEMMED EDGES OF SLEEVE.

**STEP - 8**



8. BASTE SLEEVE IN ARMHOLE, SMALL PERFORATION AT UNDERARM SEAM AND SLEEVE SEAM AT SHOULDER SEAM, EASING SLEEVE TO FIT. STITCH TWICE. TRIM CLOSE TO STITCHING, OVERCAST.

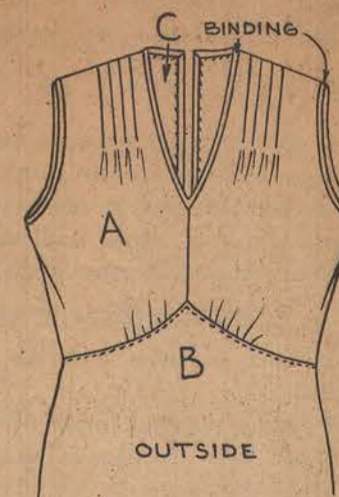
**STEP - 9**



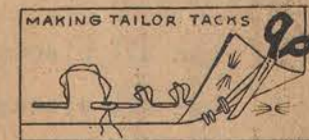
9. TIE ENDS OF RIBBONS IN BOWS. THE OUTER EDGES OF JACKET AND FREE EDGES OF SLEEVES MAY BE BOUND.

TO BIND, CUT AWAY SEAM ALLOWANCE FROM EDGES TO BE BOUND, THEN CUT BIAS STRIPS OF FABRIC 1 INCH WIDE, FOLD LENGTHWISE AND PRESS. STITCH RAW EDGES TO OUTSIDE 1/8 INCH FROM EDGES, FELL FOLDED EDGE OVER SEAM.

**STEP - 10**



**NIGHTGOWN AS IN VIEW 2**  
10. BIND NECK, BACK, ARMHOLE AND LOWER EDGES IN SAME MANNER AS JACKET.



To make tailor tacks, use double thread of a color easy to see; take a back stitch, leaving a loop, then a long straight stitch; clip each long stitch, separating the material, then clip the loop stitches, which will leave half the thread on each section.