

Encore

SEE - 17 1/2 inch seam allowed

Dangerous

SEE - 17 1/2 inch seam allowed

Dictator

SEE - 17 1/2 inch seam allowed

Patoukye Beret

SEE - 17 1/2 inch seam allowed

Racket

SEE - 17 1/2 inch seam allowed

Kerchief

SEE - 17 1/2 inch seam allowed

Button-Button

SEE - 17 1/2 inch seam allowed

Rain or Shine

SEE - 17 1/2 inch seam allowed

Mary, Mary

SEE - 17 1/2 inch seam allowed

Sweetheart

SEE - 17 1/2 inch seam allowed

Summertime

SEE - 17 1/2 inch seam allowed

Quick Trick

SEE - 17 1/2 inch seam allowed

IMPORTANT NOTICE

SEE - 17 1/2 inch seam allowed

TABLES HAT

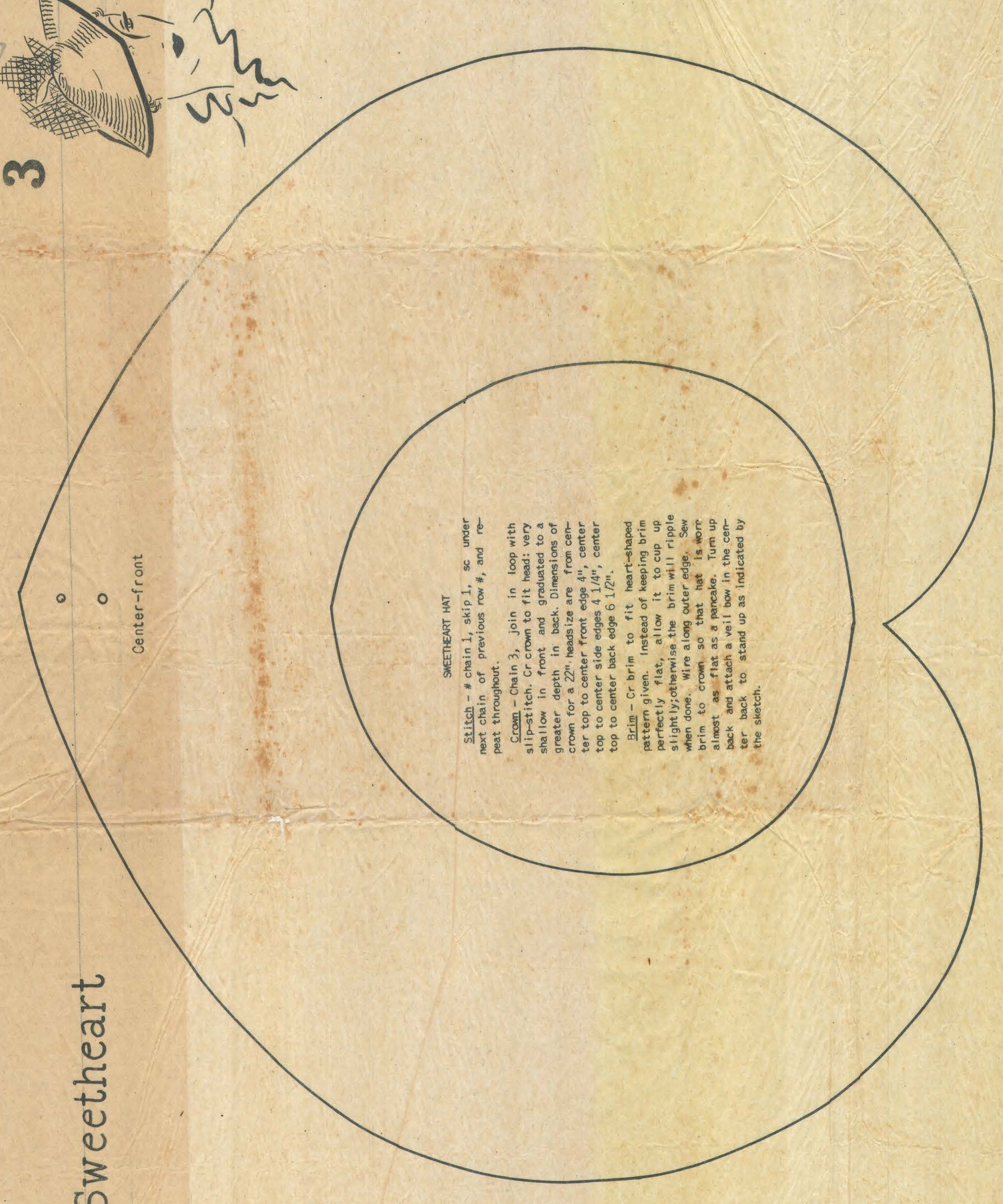
SEE - 17 1/2 inch seam allowed



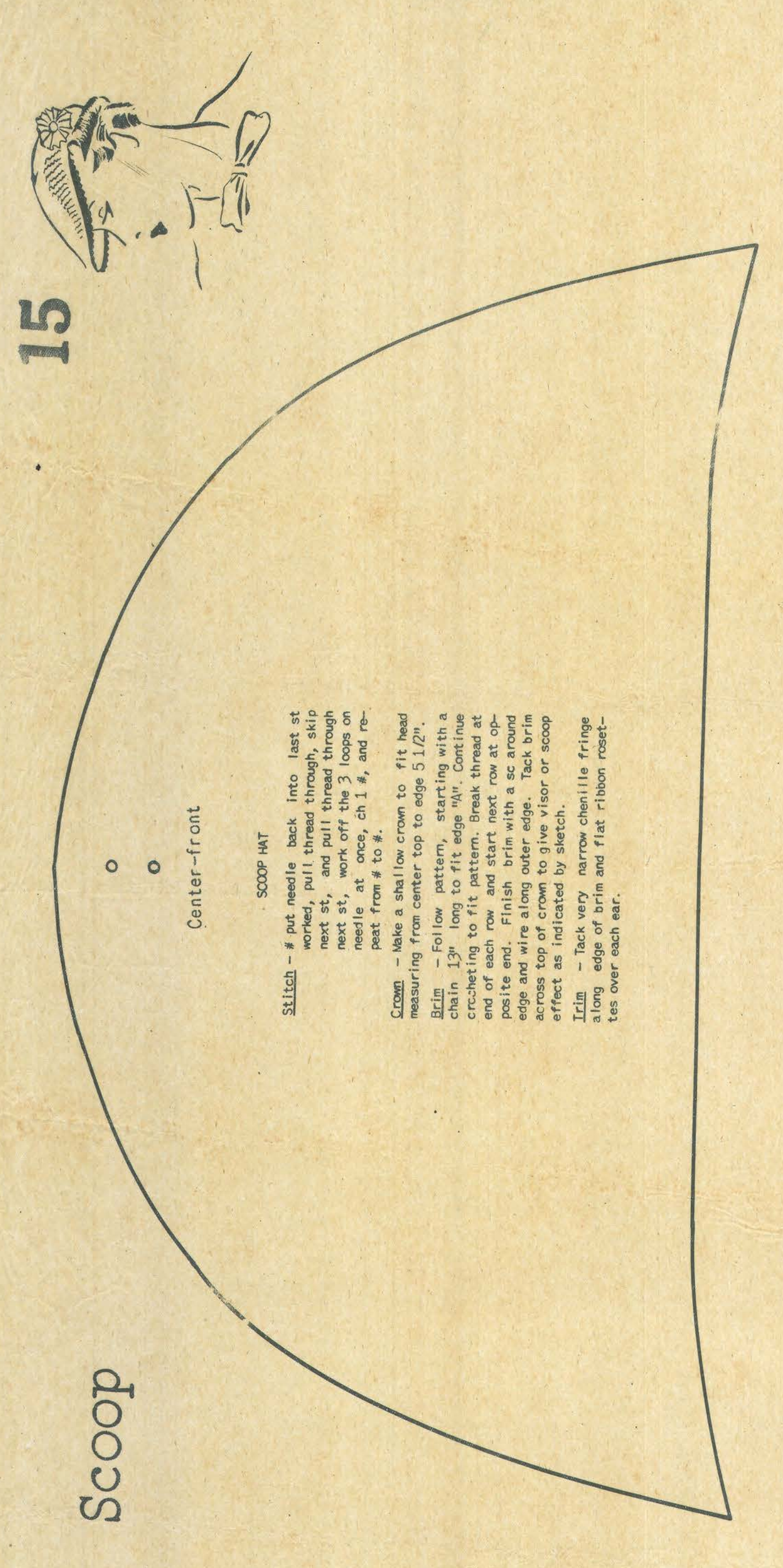
Summertime



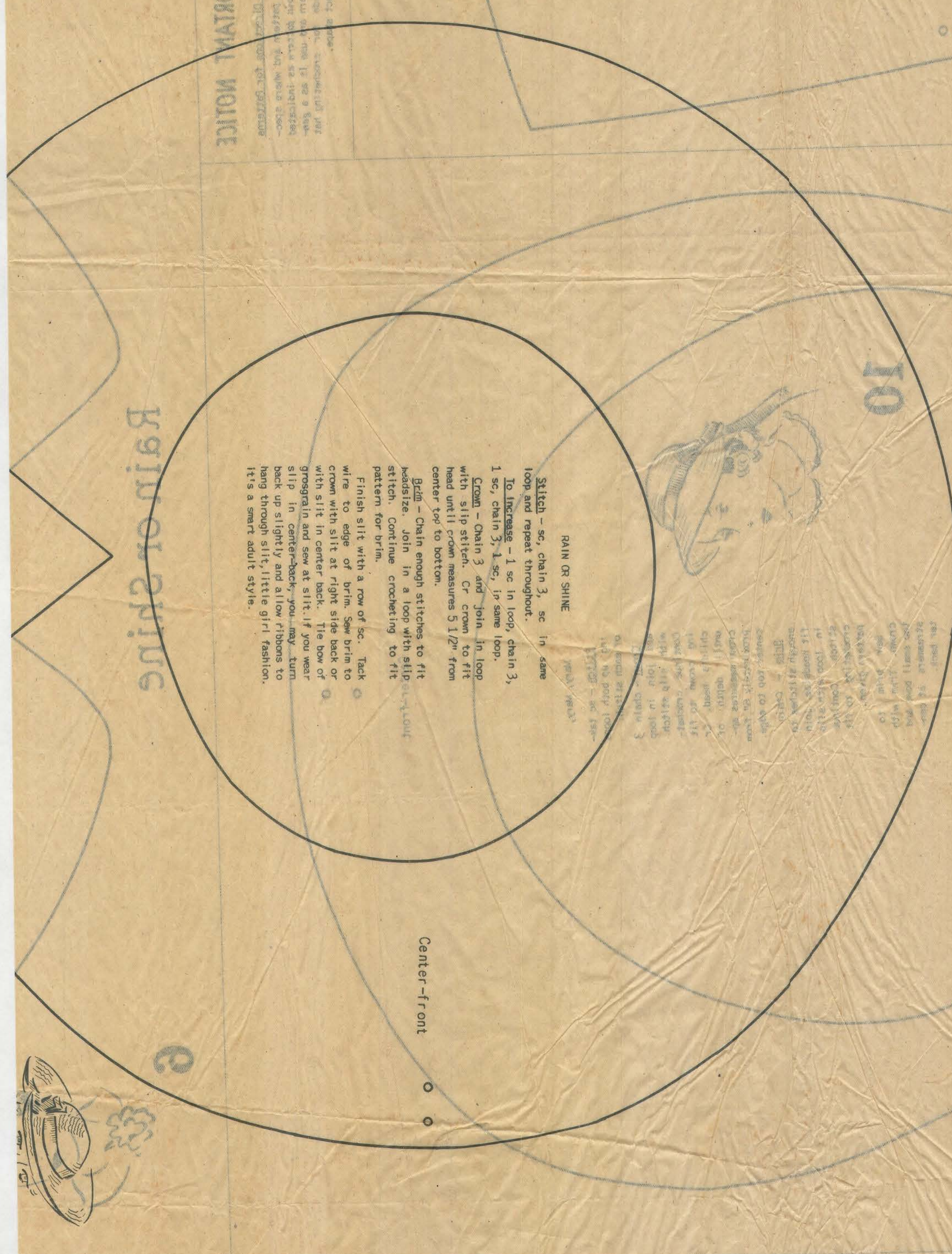
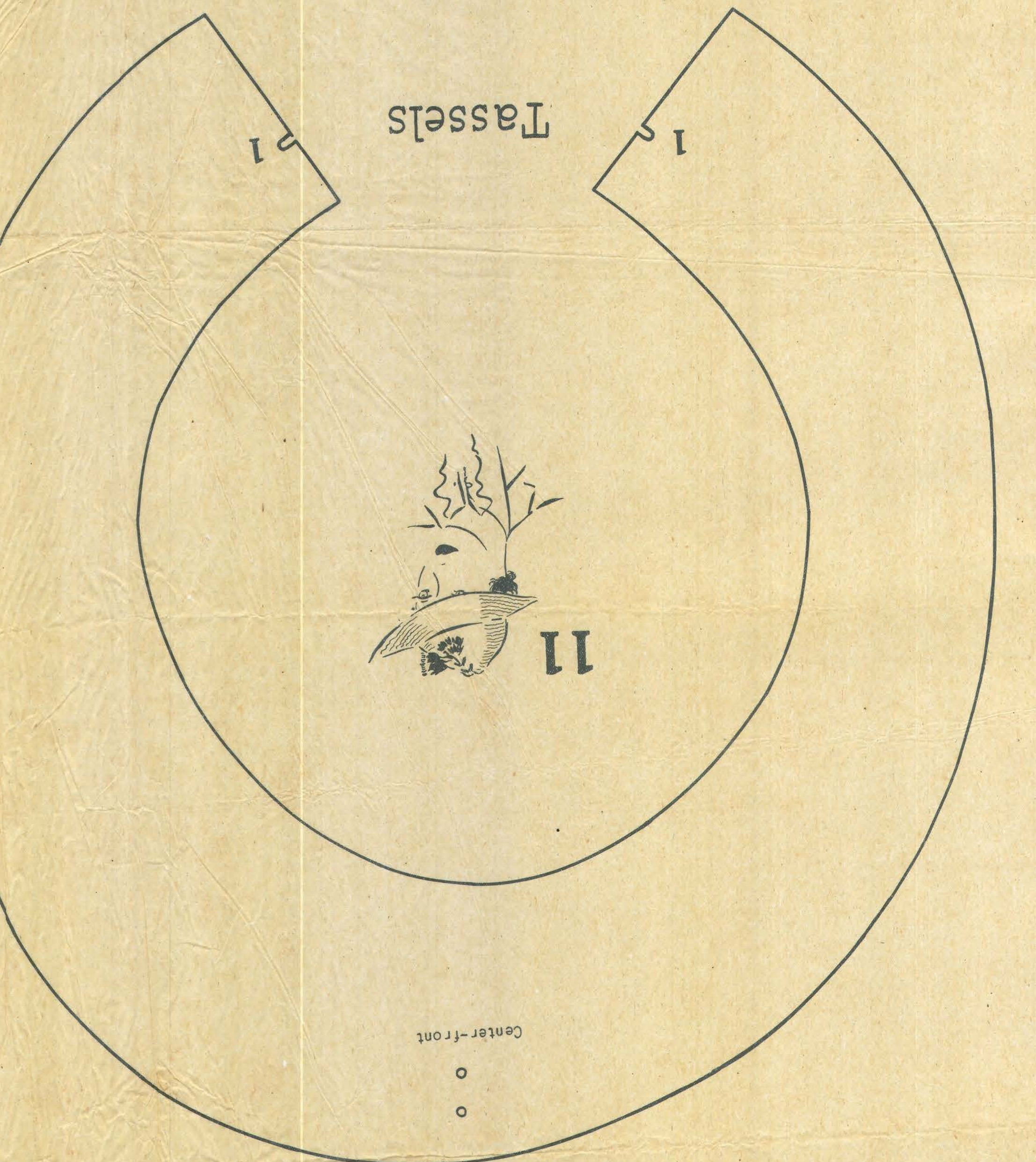
Sweetheart



15



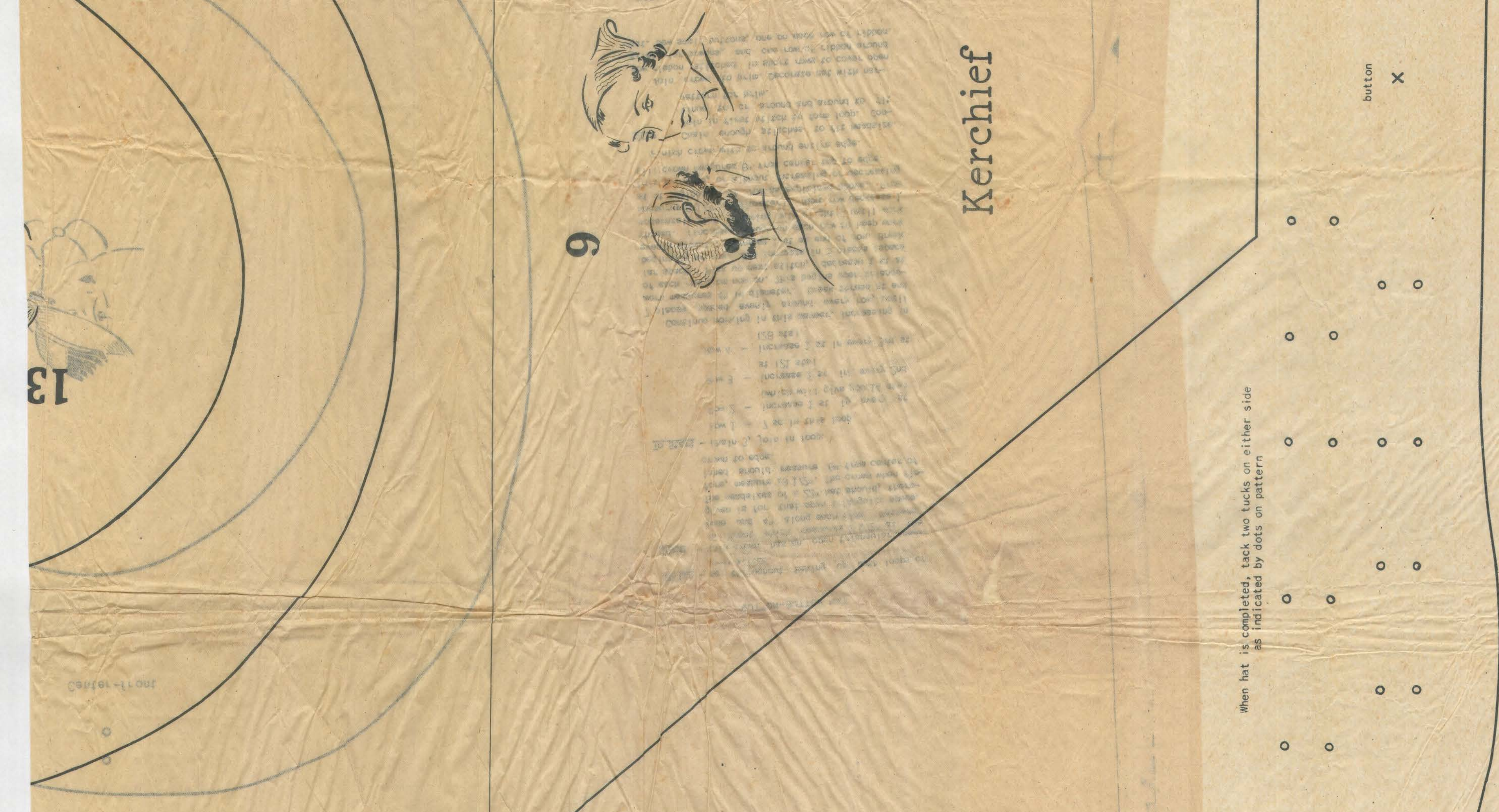
Tassels



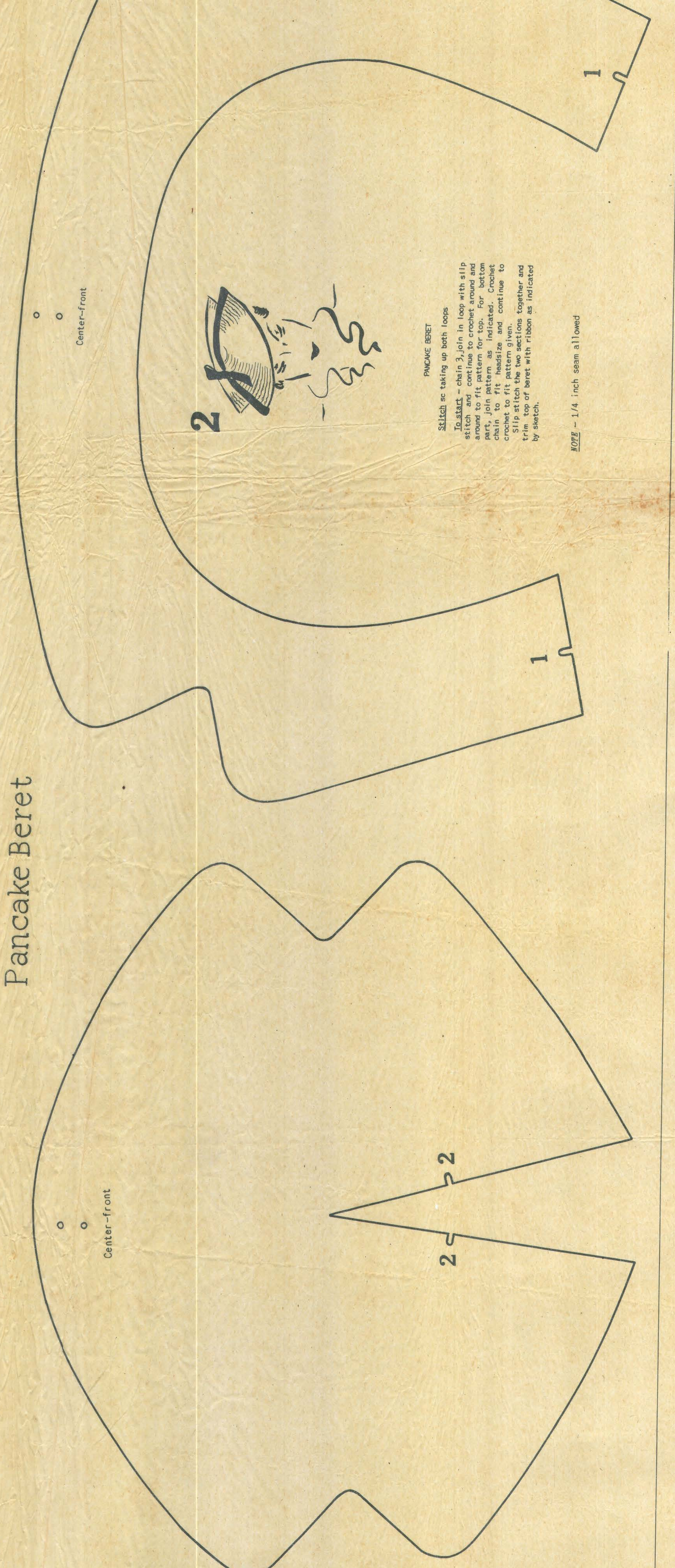
MAKING MOCHA

MAKING MOCHA
 1. Cut out the pattern pieces for the crown and brim.
 2. Sew the crown pieces together, leaving a seam allowance.
 3. Sew the brim pieces together, leaving a seam allowance.
 4. Attach the crown to the brim, matching the center-front.
 5. Press the hat to give it a smooth finish.

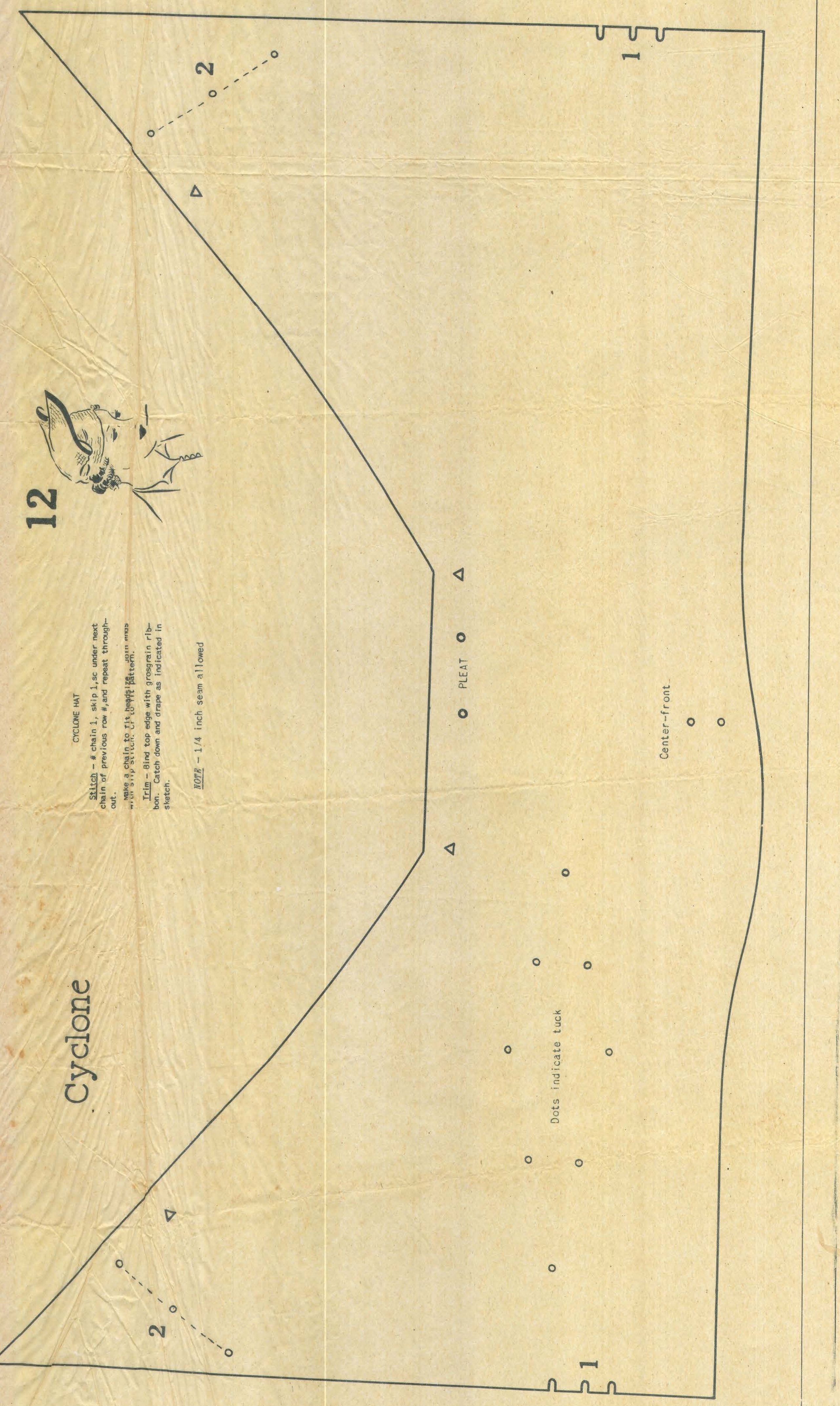
Kerchief



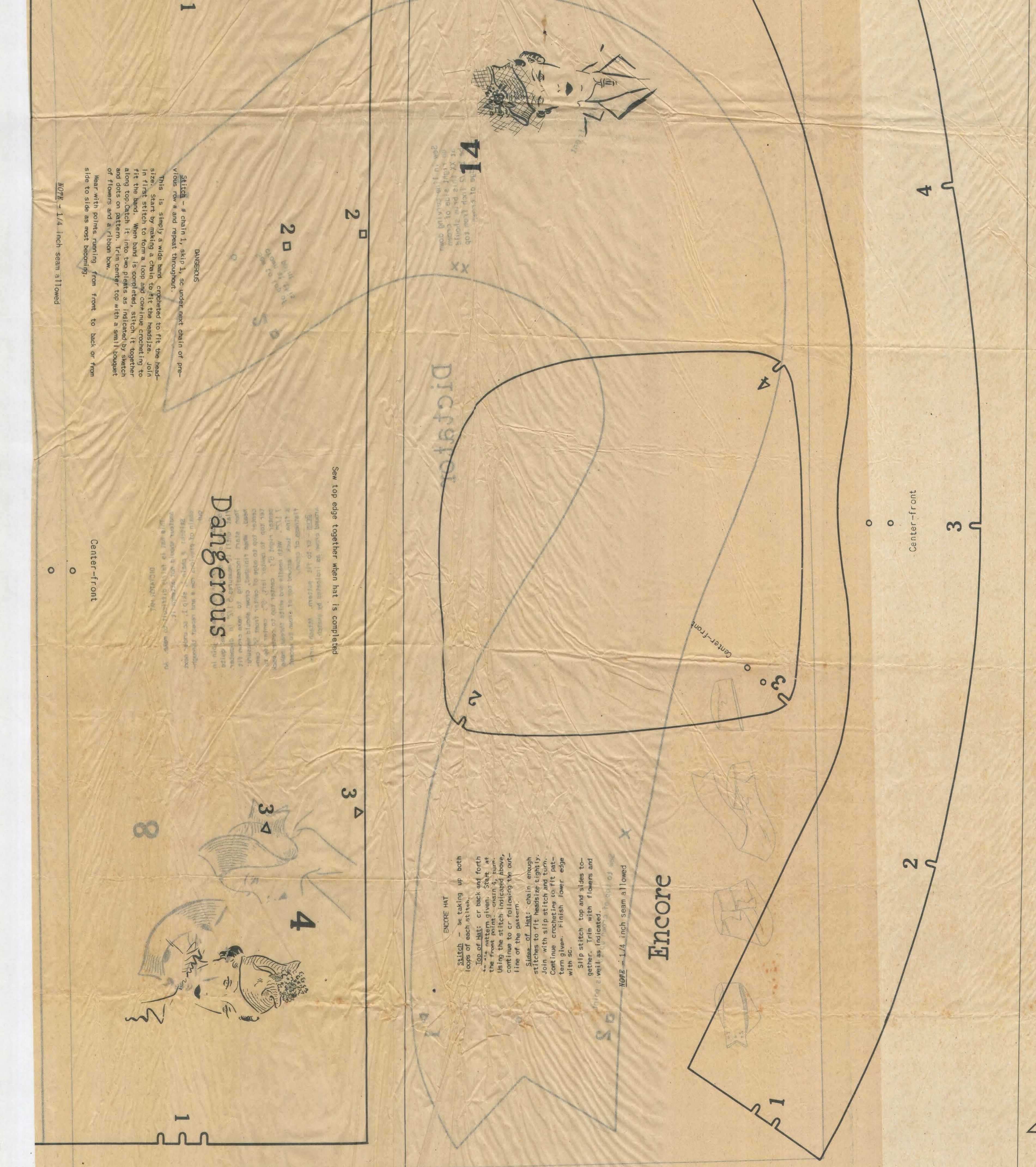
Pancake Beret



Cyclone



Encore



Dangerous

