



GASP Archives Copyright 2024

Pictorial Review 6785 (1933) Size 14 Bust 32 Hip 35

PDF file 1/2 :

1. Envelope front / back
2. One page instructions as long tissue piece printed both sides.

PDF file 2/2:

File contains the pattern pieces.

Pattern is incomplete missing :

1. D
2. F
3. G
4. L

File is left open for personal use with Adobe Illustrator / InkScape or similar. Scans are A0 or larger and may print as A4 with Adobe tiling instructions. Files are not for resale or trading with other pdf files.

6785

14 32 35 34

SIZE BUST HIP

INS.
Skirt
length
including
hem

25 Cents

1/-

Instructions imprimées en français et en anglais



GASP ARCHIVES - 1933

1

3

MATERIALS SUITABLE

Seersucker

Gabardine

Pique

Flannel

Jersey

Broadcloth

A.B.C. Fabrics in some of the above materials.

PICTORIAL PRINTED PATTERNS

PICTORIAL REVIEW PATTERN COMPANY, INC.

MATERIAL REQUIRED—Without nap—2-inch hem allowed on skirt

This costume is made in these sizes:

View 1—

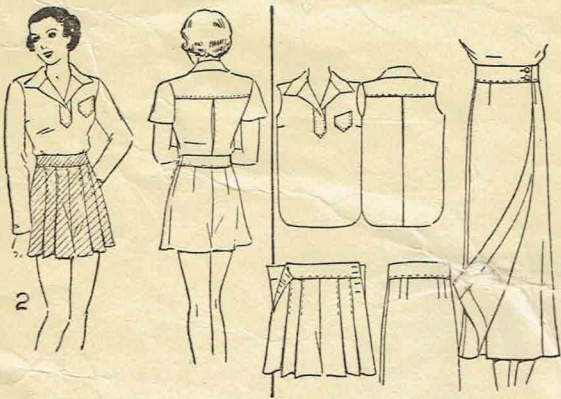
Blouse and shorts	Sizes									
	12	13	14	15	16	17	18	20		
	Bust 30	31	32	33	34	35	36	38	40	
31" material	3 $\frac{3}{8}$	3 $\frac{3}{8}$	3 $\frac{1}{2}$	3 $\frac{1}{2}$	3 $\frac{5}{8}$	3 $\frac{7}{8}$	4 $\frac{1}{8}$	4 $\frac{3}{8}$	4 $\frac{1}{2}$	yds.
36" "	2 $\frac{3}{4}$	2 $\frac{3}{4}$	2 $\frac{7}{8}$	2 $\frac{7}{8}$	3 $\frac{1}{8}$	3 $\frac{1}{4}$	3 $\frac{3}{8}$	3 $\frac{5}{8}$	3 $\frac{3}{4}$	"

View 2—Two materials

36" for blouse	1 $\frac{3}{4}$	1 $\frac{3}{4}$	1 $\frac{7}{8}$	1 $\frac{7}{8}$	2	2 $\frac{1}{8}$	2 $\frac{1}{8}$	2 $\frac{1}{8}$	2 $\frac{3}{8}$	yds.
54" " "	1 $\frac{1}{4}$	1 $\frac{1}{4}$	1 $\frac{1}{8}$	1 $\frac{1}{8}$	1 $\frac{1}{8}$	1 $\frac{1}{2}$	1 $\frac{1}{2}$	1 $\frac{1}{2}$	1 $\frac{1}{8}$	"
36" " shorts	1 $\frac{1}{8}$	1 $\frac{1}{8}$	1 $\frac{1}{8}$	1 $\frac{1}{2}$	1 $\frac{1}{4}$	1 $\frac{1}{4}$	1 $\frac{1}{8}$	1 $\frac{1}{8}$	1 $\frac{1}{8}$	"
54" " " "	1 $\frac{1}{8}$	1 $\frac{1}{8}$	1 $\frac{1}{4}$	1 $\frac{1}{4}$	1 $\frac{1}{4}$	1 $\frac{1}{4}$	1 $\frac{1}{4}$	1 $\frac{1}{4}$	1 $\frac{1}{8}$	"

View 3—Blouse, skirt and shorts GASP ARCHIVES - 1933

36" material	4 $\frac{1}{2}$	4 $\frac{5}{8}$	5	5 $\frac{1}{4}$	5 $\frac{3}{8}$	5 $\frac{3}{4}$	6	6 $\frac{1}{4}$	6 $\frac{3}{8}$	yds.
--------------	-----------------	-----------------	---	-----------------	-----------------	-----------------	---	-----------------	-----------------	------

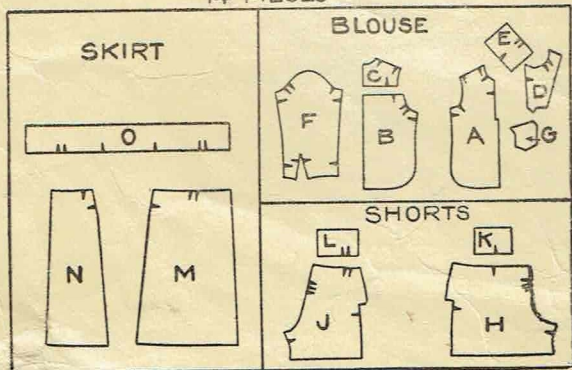


WOMEN'S AND MISSES' SHORTS, BLOUSE AND SKIRT. This smart outfit has many uses. The shorts are pleated in front; the slim wrap-around skirt is finished with a belt at the waist; the shirt is the popular boyish style, with an inverted-pleat below the yoke in back. Blouse may have long or short sleeves. Width of skirt, size 16, about 1 $\frac{1}{8}$ yard.

NOTION GUIDE

- Two 100-yard spools of good quality thread
- 10 medium size buttons
- 2 large snap fasteners

14 PIECES



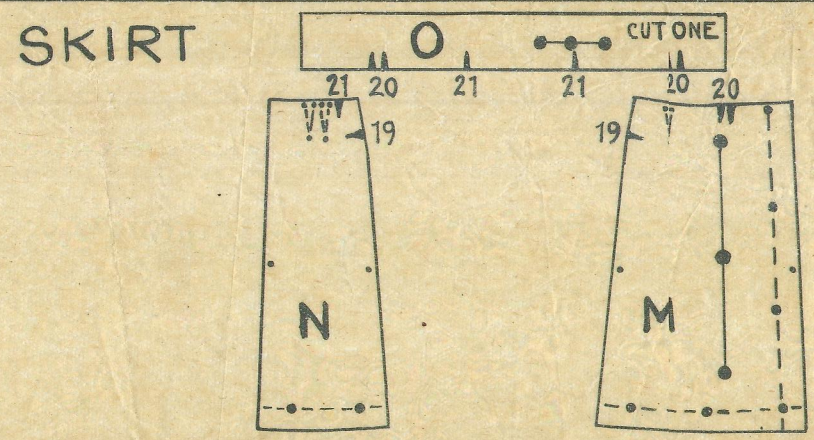
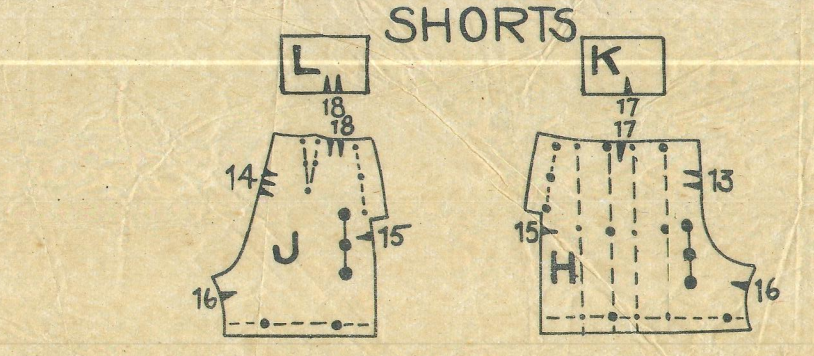
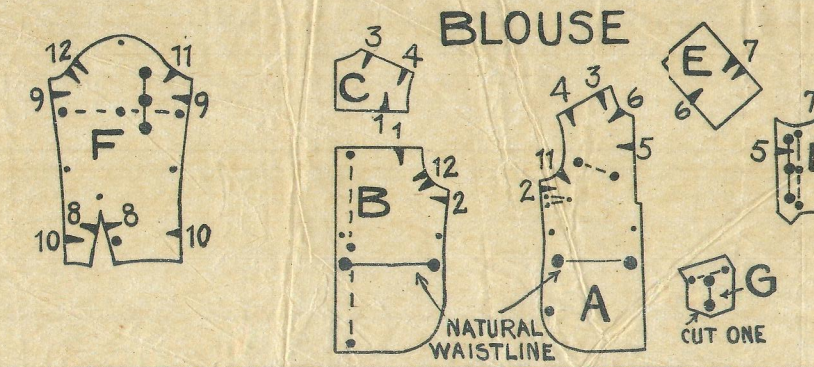
CUTTING INSTRUCTIONS

- Before cutting material, pin pattern pieces together. Test length and make necessary adjustments on pattern.
- Illustrations, and full instructions for these adjustments, are included in the pattern.
- Press fold out of material; wool should be shrunk. Straighten material by tearing across one end, or by drawing a thread. Lay material out on a flat surface. Be sure that it is smooth.
- Press pattern pieces. Place them on material as illustrated in Cutting Guide. When half pattern is placed on a single thickness of material, broken line on Cutting Guide represents the other half of the pattern.
- Mark notches and perforations with tailors' chalk or thread.
- All instructions for making are clearly printed on each piece of the pattern.

Lengthening or shortening lines are indicated on the pattern. Cut or fold the pattern on these lines.

Place sections E, K and L on a lengthwise or crosswise fold. Cut 1 each of sections G and O; place patterns on material as illustrated in cutting guide, keeping right side of material up. Cut a facing for extension on section J from outer edge to 3/8 inch inside small perforations. For short sleeve, cut off section F along medium perforations.

TO IDENTIFY PATTERN PIECES



Usez le diagramme ci-dessus pour identifier les pièces de votre patron. Comparez avant de couper.

NUMBER OF PIECES

- 14 Pieces. Half Pattern Given
- | | |
|------------------------|-------------------|
| BLOUSE | SHORTS |
| A—Front of Blouse | H—Front of Shorts |
| B—Back of Blouse | J—Back of Shorts |
| C—Back Yoke | K—Front Waistband |
| D—Band and Underfacing | L—Back Waistband |
| E—Collar | |
| F—Sleeve | SKIRT |
| G—Pocket | M—Front of Skirt |
| | N—Back of Skirt |
| | O—Entire Belt |

Pictograf No. 6785

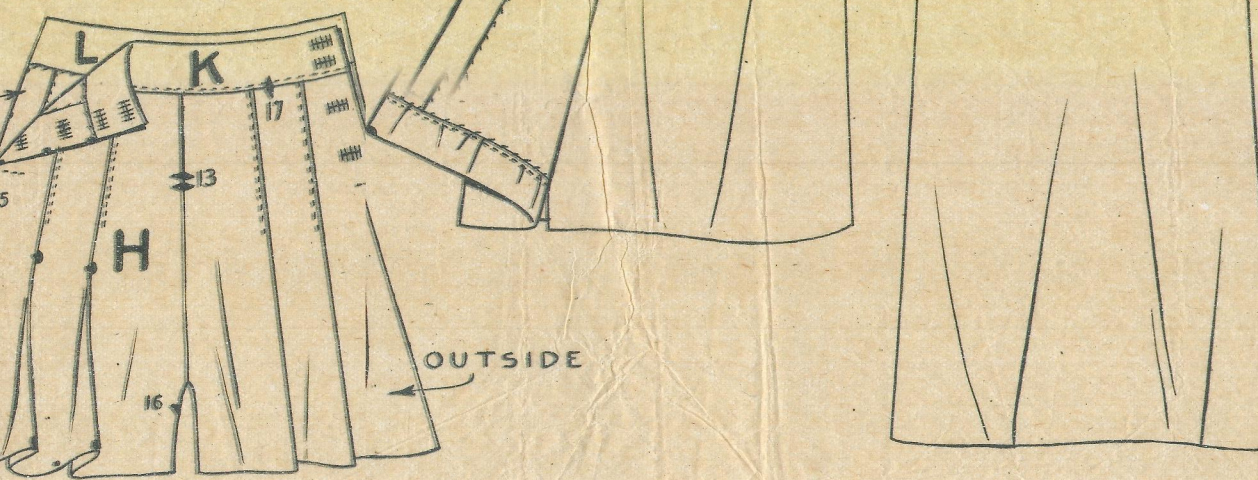
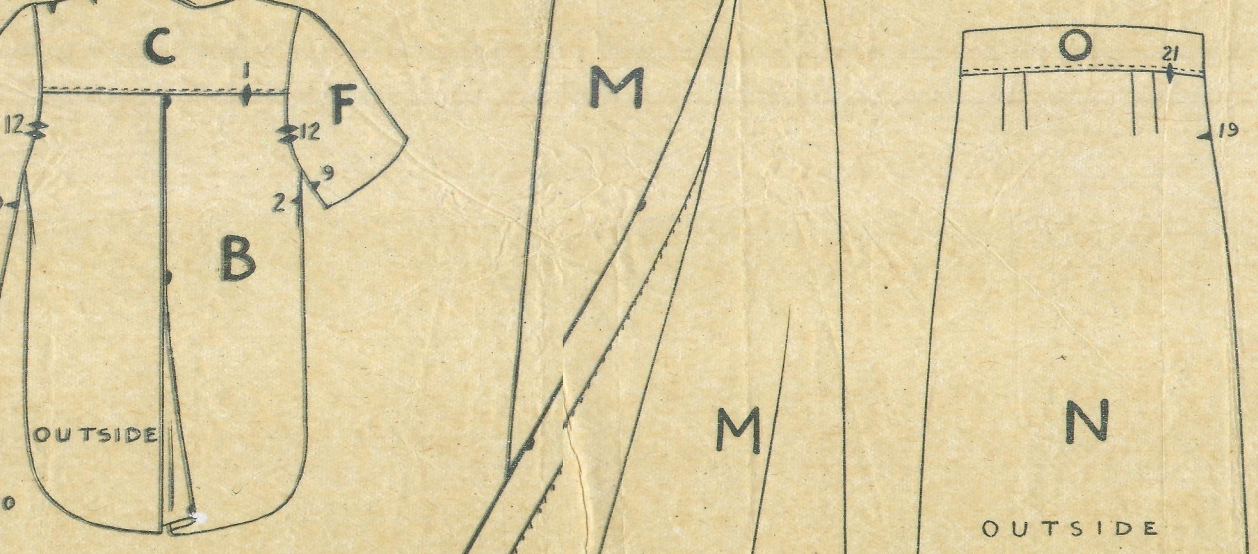
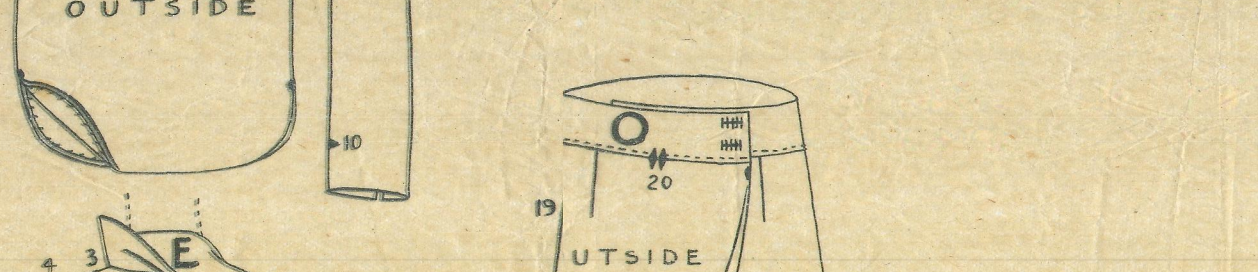
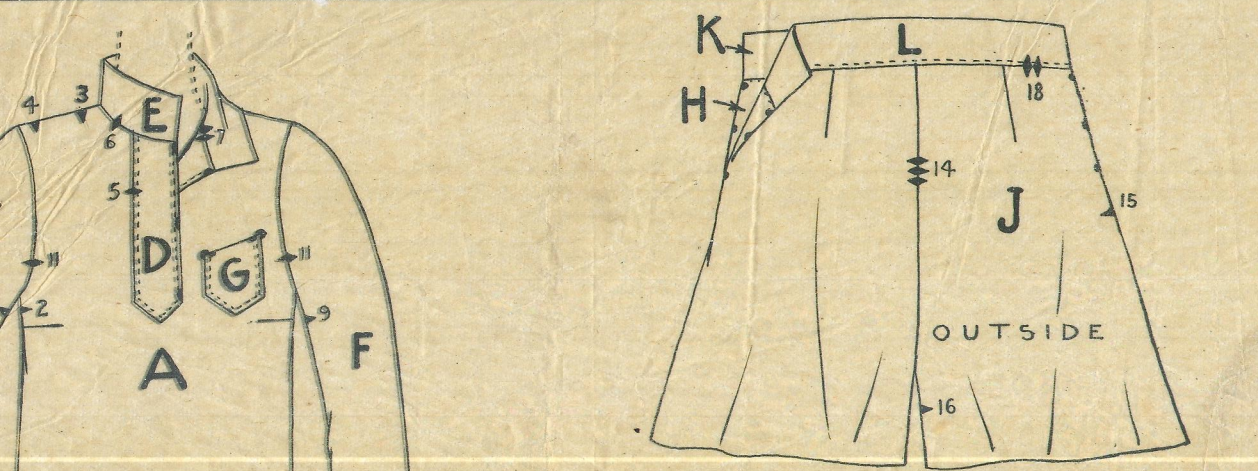
BLOUSE

- Make darts in front A. Make an inverted-pleat in back B. Join back yoke C to back of blouse B in a lapped seam.
- 3-4. Close underarm and shoulder seams. Narrow-hem lower edge of blouse.
5. Clip in diagonally 3/8 inch at left corner of opening in front A. Join left section D to left edge of opening, stitching in 1/4 inch from edge. Baste section D underneath on medium perforations to form an underfacing.

Join right band D to side and lower edges of opening in a lapped seam, stitching in 1/4 inch from edges. Turn right section D underneath on medium perforations to form an underfacing and baste.

- 6-7. Fold collar E lengthwise through center and seam ends; turn and press. Sew collar to neck and to underfacings. Fell collar over the neck seam. Slip-stitch underfacings to position, clipping in at corners. Stitch along the front edges of bands 1/4 inch from edges.
- 8-9-10. Close dart-seams in sleeves F. Close seams of sleeves. Finish lower and free edges with flat bias. Turn under 1 3/8 inch hem at lower edges of short sleeves.
- 11-12. Sew sleeves in armholes.

STEP BY STEP INSTRUCTIONS



SEWING DETAILS

WORKED BUTTONHOLES

LAPPED SEAM

Baste under the seam allowance, lap and stitch as illustrated.

FLAT BIAS FINISH

Stitch bias to garment with right sides together. Turn and slip-stitch.

SEAM FINISHES

1. Press seam open. Turn and 1/8 inch and stitc
2. Press seam open and overc edges.
3. Pink es by hand or machinen press open.

NARROW-HEM

Stitch close to raw edge, hand roll and slip-stitch.

SEWING SLEEVE IN ARMHOLE

Gather top of sleeve between notches. Pin in armhole seam to seam, with small perforation at shoulder seam, notches matching. Baste with the sleeve toward you; use small stitches and ease fullness between notches. Stitch in armhole.

TURNING HEM

Turn under seam allowance, stitch close to edge. Turn hem and slip-stitch.

POCKET G - Turn hem at top of pocket and stitch on front A to the left of center-front.

SHORTS

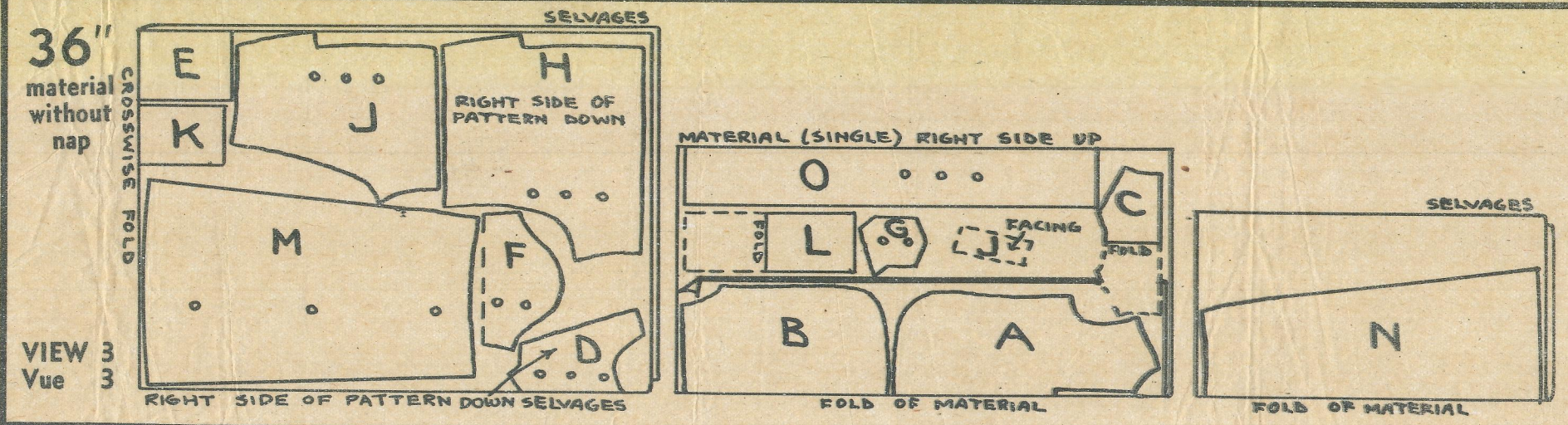
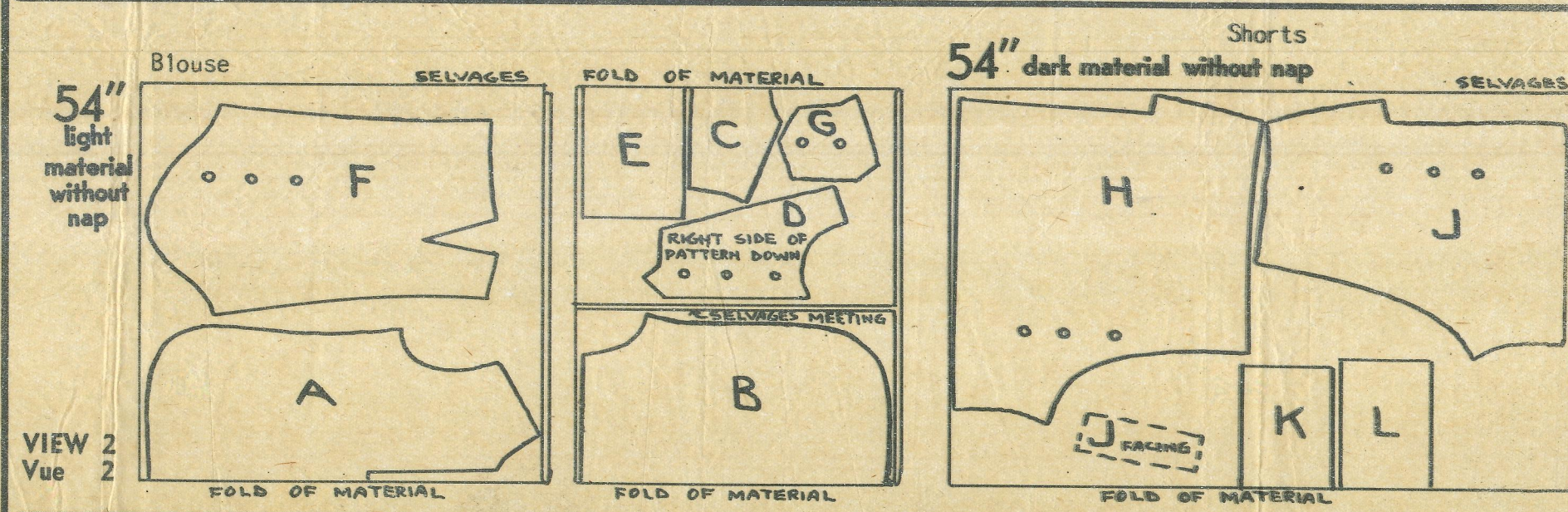
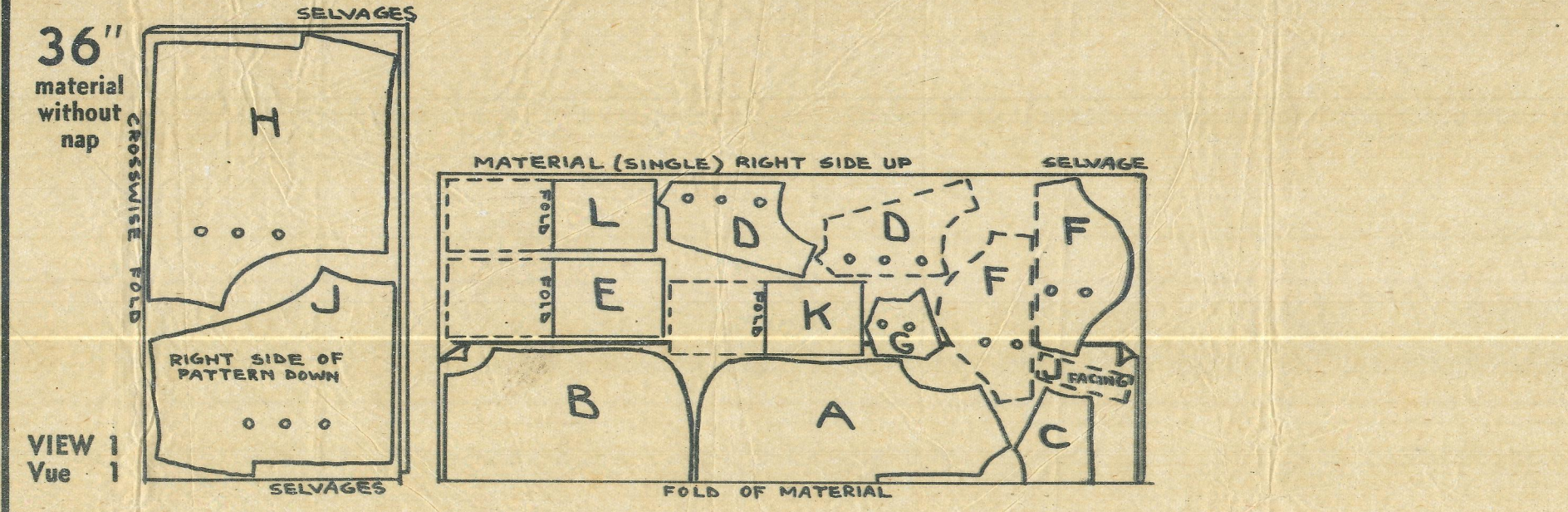
13. Turn under extensions on fronts H and hem to position. Make pleats in fronts H and baste. Stitch down about 6 inches along edges of pleats. Close the center-front seam of fronts H.
- 14-15-16. Make darts in backs J. Close center-back seam of back sections J. Close side seams of shorts below extension. Face extensions on back J. Lap fronts to lines of small perforations in back and stitch across lower lapped edges. Close lower leg seams of shorts.
- 17-18. Fold waistbands K and L lengthwise through center and seam ends; turn and press. Join waistbands to top of shorts in lapped seams; fell free edges over seams. Turn hems at lower edges. Finish shorts for closing with buttons and buttonholes.

SKIRT

19. Make darts in front of skirt M and back N. Close side seams of skirt. Turn hem on right-front M. Narrow-hem front edge of left front M.
- 20-21. Fold belt O lengthwise through center and seam ends, turn and press. Join belt to top of skirt in a lapped seam. Fell free edge of belt over seam. Turn hem at lower edge. Finish skirt for closing with buttons and buttonholes.

CUTTING GUIDE SHOWING SIZE 14 YEARS OR 32 -INCH BUST

Plan de Coupe pour Taille de 14 Ans, ou Tour de Poitrine de 32 Pouces



HELPFUL HINTS

Important - SEAM ALLOWANCE - Note that the allowance for ALL SEAMS in this pattern is 3/8 inch.

The exact size of perforations used:

small medium large

Patterns and methods of making them are patented as follows: U. S. A. - Sept. 22, 1925; U. S. A. - Nov. 10, 1925; U. S. A. - No. 1,612,958, July 7, 1926; Canada, Aug. 8, 1927; U. S. A. - No. 2,462,488, Dec. 1, 1949; Australia, No. 20,940; Germany, Nov. 9, 1927; No. 451,278. Other patents pending. Printed in U. S. A.