

VOGUE PATTERN SERVICE  
THE CONDÉ NAST PUBLICATIONS INC. • 8 WEST 40TH ST. • NEW YORK

7853-60c IN CANADA 65c

SIZE 12  
20 BUST 33 HIP

# VOGUE

PATTERN



B



A



GASP Archives - 1952

NO. 7853

11 PIECES IN THIS PATTERN  
CUT IN SIZES 12—14—16—18—20—40—42—44

7853—COAT "EASY-TO-MAKE"

In either of two lengths. Open or wrapover fronts below a built-up shaped neck-line. Diagonal welt pockets. Long two-piece sleeves.

| YARDAGE                   | Diagonal fabrics are not suitable |                 |                 |                 |                 |                 |                 |                 |
|---------------------------|-----------------------------------|-----------------|-----------------|-----------------|-----------------|-----------------|-----------------|-----------------|
| Size                      | 12                                | 14              | 16              | 18              | 20              | 40              | 42              | 44              |
| Bust                      | 30                                | 32              | 34              | 36              | 38              | 40              | 42              | 44              |
| <b>VIEW A</b>             |                                   |                 |                 |                 |                 |                 |                 |                 |
| 39" Without Nap†          | 3                                 | 3               | 3               | 3 $\frac{3}{8}$ | 3 $\frac{3}{8}$ | 3 $\frac{3}{4}$ | 3 $\frac{3}{4}$ | 3 $\frac{3}{4}$ |
| 54" With Nap*             | 2 $\frac{1}{4}$                   | 2 $\frac{1}{4}$ | 2 $\frac{1}{4}$ | 2 $\frac{1}{2}$ | 2 $\frac{1}{2}$ | 2 $\frac{3}{4}$ | 2 $\frac{3}{4}$ | 2 $\frac{7}{8}$ |
| 54" Without Nap†          | 2 $\frac{1}{8}$                   | 2 $\frac{1}{4}$ | 2 $\frac{1}{4}$ | 2 $\frac{1}{4}$ | 2 $\frac{1}{4}$ | 2 $\frac{1}{4}$ | 2 $\frac{5}{8}$ | 2 $\frac{5}{8}$ |
| <b>VIEW B</b>             |                                   |                 |                 |                 |                 |                 |                 |                 |
| 35" With Nap*             | 3 $\frac{3}{8}$                   | 3 $\frac{3}{8}$ | 3 $\frac{3}{8}$ | 3 $\frac{5}{8}$ | 3 $\frac{5}{8}$ | 3 $\frac{3}{4}$ | 3 $\frac{3}{4}$ | 3 $\frac{3}{4}$ |
| 54" Without Nap†          | 2                                 | 2               | 2               | 2 $\frac{1}{8}$ | 2 $\frac{1}{8}$ | 2 $\frac{1}{8}$ | 2 $\frac{1}{8}$ | 2 $\frac{1}{8}$ |
| <b>VIEW A LINING</b>      |                                   |                 |                 |                 |                 |                 |                 |                 |
| 39"                       | 2 $\frac{1}{2}$                   | 2 $\frac{1}{2}$ | 2 $\frac{5}{8}$ | 2 $\frac{7}{8}$ | 2 $\frac{7}{8}$ | 2 $\frac{7}{8}$ | 3               | 3 $\frac{1}{8}$ |
| <b>VIEW B LINING</b>      |                                   |                 |                 |                 |                 |                 |                 |                 |
| 39"                       | 2 $\frac{1}{8}$                   | 2 $\frac{1}{4}$ | 2 $\frac{1}{4}$ | 2 $\frac{1}{2}$ | 2 $\frac{5}{8}$ | 2 $\frac{5}{8}$ | 2 $\frac{3}{4}$ | 2 $\frac{7}{8}$ |
| <b>VIEW A INTERFACING</b> |                                   |                 |                 |                 |                 |                 |                 |                 |
| 25" Hair canvas           | 1                                 | 1               | 1               | 1 $\frac{1}{8}$ | 1 $\frac{1}{8}$ | 1 $\frac{1}{8}$ | 1 $\frac{1}{8}$ | 1 $\frac{1}{8}$ |
| <b>VIEW B INTERFACING</b> |                                   |                 |                 |                 |                 |                 |                 |                 |
| 25" Hair canvas           | $\frac{7}{8}$                     | $\frac{7}{8}$   | $\frac{7}{8}$   | $\frac{7}{8}$   | $\frac{7}{8}$   | $\frac{7}{8}$   | 1               | 1               |

**SHOULDER PADS**

Use Vogue Pattern 7503

Length of View A at centre-back from natural neck-line... 31 $\frac{1}{2}$  31 $\frac{3}{4}$  32 32 $\frac{1}{2}$  33 33 $\frac{1}{2}$  34 34 $\frac{1}{2}$

Length of View B at centre-back from natural neck-line... 26 26 $\frac{1}{4}$  26 $\frac{1}{2}$  27 27 $\frac{1}{4}$  27 $\frac{3}{4}$  28 28 $\frac{1}{2}$

Width at lower edge of View A Coat in size 16 is 58 $\frac{1}{2}$ " (about 1 $\frac{5}{8}$  yards)

Width at lower edge of View B Coat in size 16 is 56" (about 1 $\frac{1}{2}$  yards)

3" Hem allowed

\*With nap, pile or a one-way design.

†Without nap or pile or with a two-way design.

Above requirements do not allow for shrinkage.

Yardage does not allow for matching plaid or stripes.

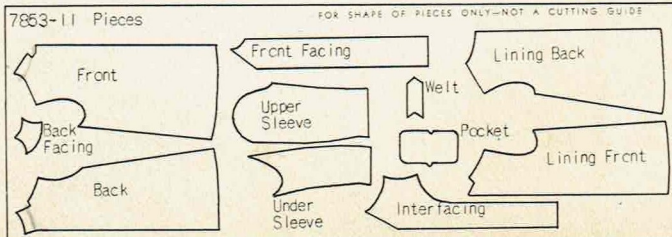
**SUITABLE FABRICS**

|                 |                     |          |
|-----------------|---------------------|----------|
| Tweed           | Shantung            | Corduroy |
| Flannel         | Worsted             | Faille   |
| Wool Broadcloth | Lightweight Woollen | Ottoman  |
| Zibeline        | Fleece              |          |

Diagonal fabrics are not suitable.

COPYRIGHT 1952. THE CONDÉ NAST PUBLICATIONS INC.

PRINTED IN U. S. A.



GASP Archives - 1952

FABRICS YOU WANT . . . FASHIONS YOU LIKE . . .  
IN VOGUE PATTERN BOOK



**CORRESPONDING MEASUREMENTS, MISSES' AND WOMEN'S SIZES**  
 Except separate skirts, slacks, etc. All measurements in inches.

|                |                         |    |     |     |     |     |    |     |     |     |     |     |
|----------------|-------------------------|----|-----|-----|-----|-----|----|-----|-----|-----|-----|-----|
| Size           | 10                      | 12 | 14  | 16  | 18  | 20  | 40 | 42  | 44  | 46  |     |     |
| Bust           | Fullest part, tape      |    | 28  | 30  | 32  | 34  | 36 | 38  | 40  | 42  | 44  | 46  |
| Waist          | slightly higher in back |    | 24  | 25  | 26½ | 28  | 30 | 32  | 34  | 36  | 38  | 40  |
| Hip            | 7" below waistline      |    | 31  | 33  | 35  | 37  | 39 | 41  | 43  | 45  | 47  | 49  |
| Back Length to | Waistline*              |    | 15¾ | 16  | 16¼ | 16½ | 17 | 17¼ | 17½ | 17¾ | 18  | 18¼ |
| Sleeve length  | underarm                |    | 16¼ | 16½ | 17  | 17½ | 18 | 18  | 17¾ | 17¾ | 17½ | 17½ |

\*Measure from socket bone (prominent vertebra) to natural waistline.

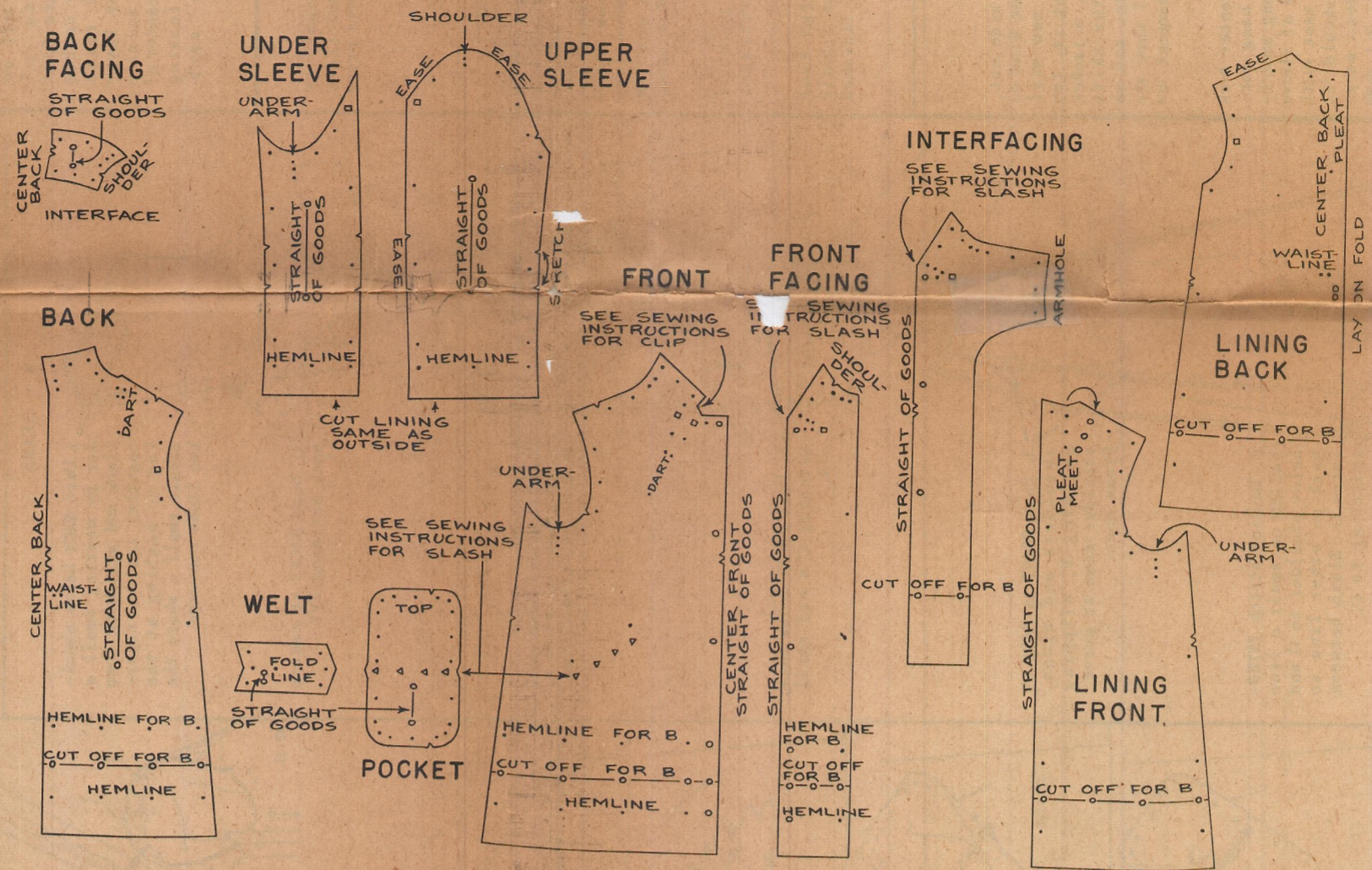
# Vogue's ABC's

pattern  
**7853**

use Vogue Dressmaking Book to  
increase your knowledge and skill

## IDENTIFICATION CHART

7853-IIPIECES



SEAM ALLOWANCE 5/8" indicated by small perforations is

## B

**Prepare fabric**  
BE SURE that woolens and washables are properly shrunk before cutting.

STRAIGHTEN ends of fabric. Draw thread and cut. Or snip selvage and tear.

PRESS out wrinkles.

### Lay out pattern

LAY OUT fabric on large surface. Keep fabric right side up, unless chart shows it folded, then right side is inside.

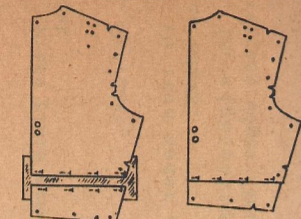
PIN all pieces of pattern to fabric exactly as on your cutting chart. Keep STRAIGHT OF GOODS perforations parallel to selvage.

When pattern piece is provided for one side only, and cutting chart is shown with material opened out, other side is indicated by broken lines.

## A Alteration

CHECK the size of the pattern by measuring it with a garment which fits you well. Or hold it up against your body to determine whether or not any of the following steps are necessary.

**TO SHORTEN:**-Pin a tuck across the pattern above the waist-line or below the hip-line at right angles to centers. Or on circulars, cut and overlap pattern. Shorten sleeve above and below elbow, the same way.

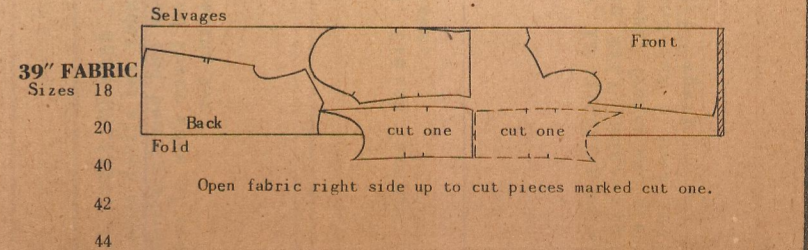
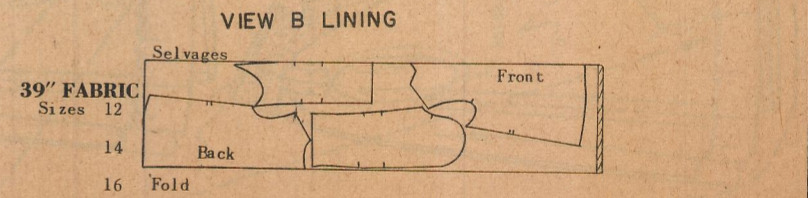
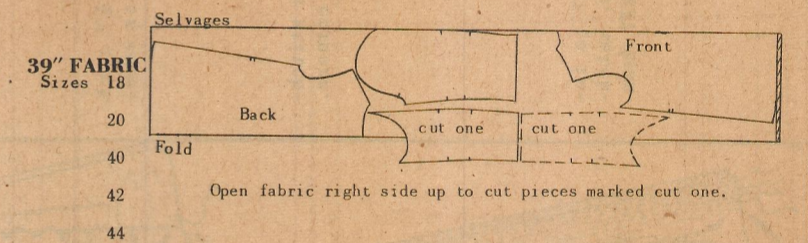
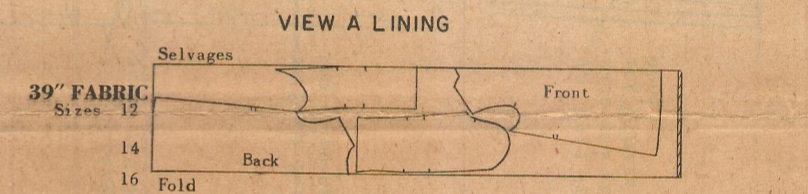
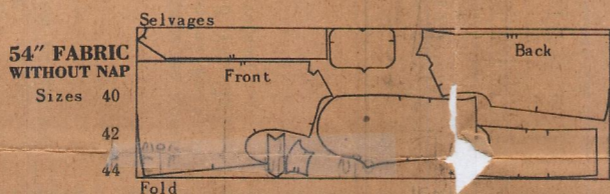
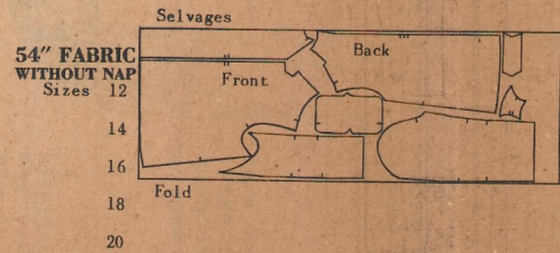
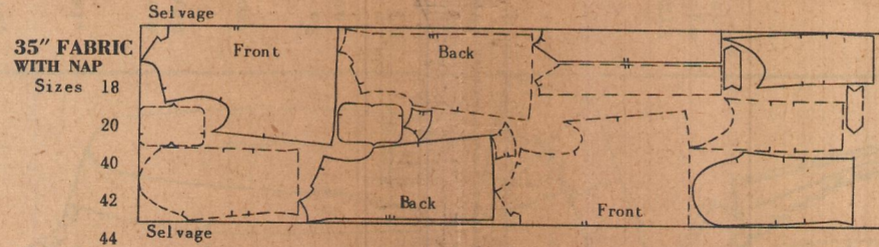
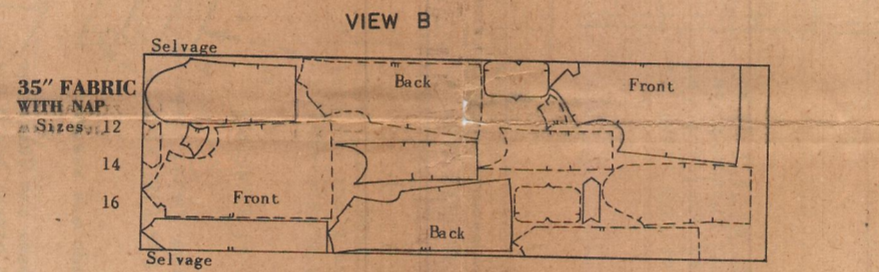
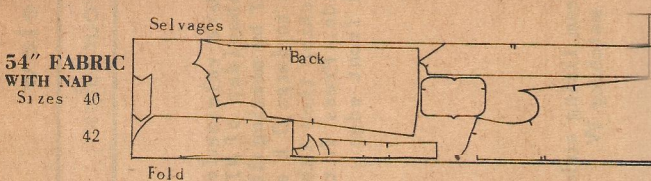
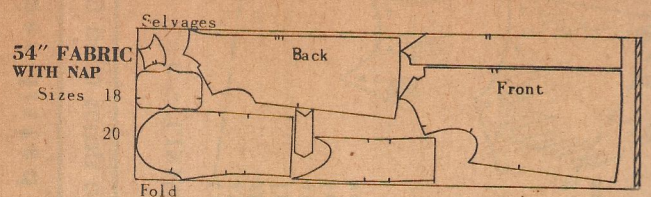
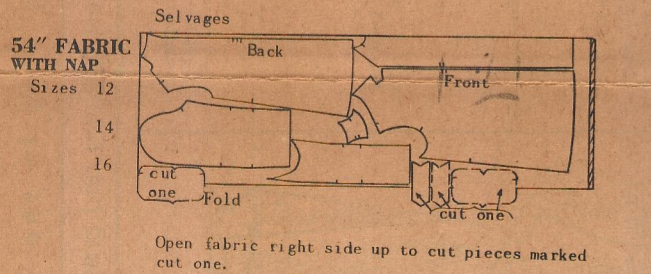
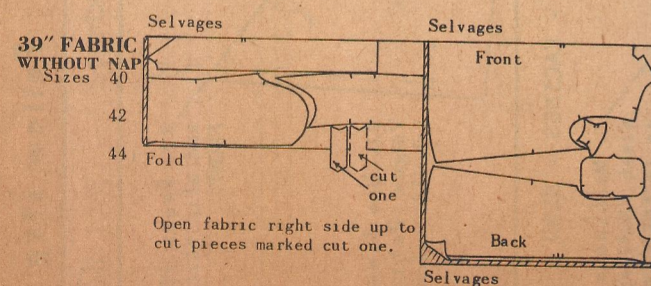
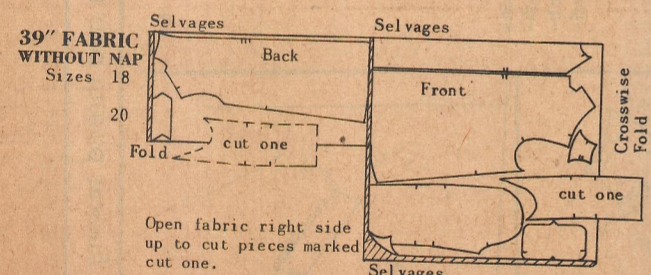
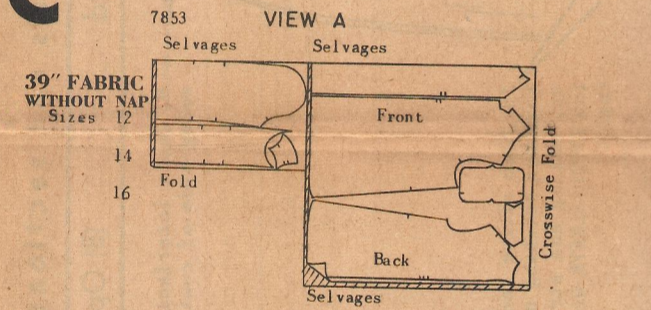


TO LENGTHEN TO SHORTEN

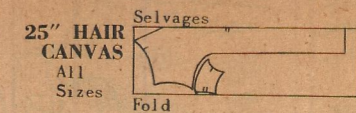
**TO LENGTHEN:**-Cut and separate the pattern at same places and pin over tissue underlay.

**FOR UNUSUAL FIGURES:**- See Vogue Dressmaking Book.

## C Cutting Layouts



### VIEW A OR B INTERFACING

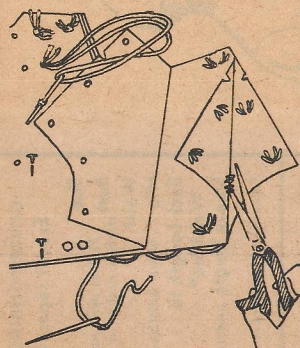


# D

## Marking

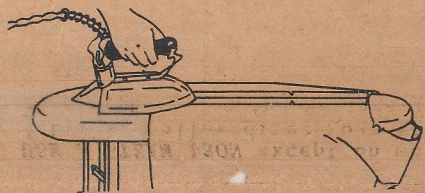
After garment is cut and before unpinning pattern run basting thread lines down center front and center back; remove after garment is finished. Also mark all perforations with tailors' tacks.

**TO MAKE TAILORS' TACKS:**-Use a double, soft, mercerized, rather thick thread, so it will tend to cling to the fabric--a different color for each type of perforation. Take one stitch through each perforation and cut off so both ends of thread are 3/4" long. On double material raise the upper layer slightly and clip through center of thread, leaving tuft on each side.



## Pressing

**PRESS** each section thoroughly as the work progresses--**DO NOT LEAVE** for one final pressing. Always press on wrong side.



**USE A STEAM IRON** except on metal fabrics. Follow directions which came with it for the various fabrics. A damp press cloth must be used with a dry iron. Test a scrap before you press garment.

Use dry, rather hot iron on metal fabrics as dampness tarnishes threads.

**PRESS VELVET or VELVETEEN** over velvet board, touching iron lightly to fabric. Then steam the finished garment.

## Fitting

Try on garment, right side out, for a fitting. Wear the same kind of underclothing and shoes you will wear with the garment. That is, try on a top coat over a suit, a jacket over a blouse and over the skirt with which it will be worn, and so on. Make shoulder pads, if they are to be used, and pin into garment for the fitting.

The center front and center back basting markings should hang vertically. Sleeves should hang smoothly. Bend arms to test size of sleeve and bring arms forward to test width across back; waist-line should fit snugly, bust and shoulders easy. Check correctness of neck. Sit down to test width and length of skirt. Fit one side only, unless your figure is greatly unbalanced. **DO NOT** overfit.

Remove and mark alterations in thread. Then pin both sides of the garment together, matching original tailors' tacks, and trace the fitting lines through to other side. Rebaste and try on again before stitching.

# E

Match  $\nabla$   $\square$   $\triangle$   $\circ$   $\circ$  to join seams and sections

BEFORE YOU START TO SEW:--

(A) Set up ironing board

(B) Open and thread sewing machine

(C) Test stitching and pressing on a scrap of your fabric

7853

Pin and baste darts and seams. Try on and adjust before stitching. (See FITTING at left.)

### SEAM FINISHINGS

Seams are illustrated unfinished to show notches.

1. Press plain seams open and pink.
2. Overcast,
3. Or turn under and stitch raw edges.
4. On edge-stitched seams overcast edges finely together.
5. Leave seams unfinished, coat is to be lined.

### A - SEAMS

1. Dart **BACK** below shoulder by meeting small  $\circ$  lines and stitching them together inside, tapering to nothing at the single small  $\circ$  where the two lines converge.
2. Seam **BACKS** at center back, matching  $\nabla$ .
3. Clip **FRONT** from neck corner to  $\square$  nearer shoulder, as illustrated.
4. Dart **FRONT** below neck, matching  $\square$ 's and small  $\circ$ 's.
5. Seam **FRONT** to **BACK** at shoulders and sides, matching  $\nabla$ , clipping shoulder seam at curve. Press open.
6. Machine-stitch **INTERFACING** on small  $\circ$  line below shoulder to  $\square$  and back on other line to large  $\circ$ . Slash between stitching to  $\square$ .
7. Trim off 3/8" on lower edge of back interfacing.
8. Lap and stitch interfacing sections together, keeping notches in line, clipping at curve.

9. Baste interfacing to wrong side of coat.
10. Seam sleeve sections together, matching notches, easing and stretching **UPPER-SLEEVE**, accordingly.
11. Pin sleeve into armhole, matching  $\square$ - $\nabla$ -small  $\circ$ 's--small  $\circ$  at shoulder. Hold sleeve toward you and baste, adjusting ease. Stitch. Trim seam and press toward sleeve, shrinking out ease.
12. Fold **WELT** and stitch ends. Trim, turn and press.
13. Edge-stitch fold of **WELT** and run 3 rows inside, 3/8" apart.
14. Mark line of  $\Delta$ 's on **FRONT** in thread--do not cut.
15. Baste **WELT** to **FRONTS** below  $\Delta$  line raw edge just touching line, taking up 1/4" on **WELT**.
16. Baste **POCKET** over **WELT** and **FRONTS**, right sides together, wider portion toward shoulder.
17. Stitch 1/4" each side and across ends.
18. Slash between stitching, clipping to corners.
19. Pull **POCKET** to inside and stitch, matching  $\nabla$ . Press **POCKET** downward.

Follow step by step in the order listed below

OUTSIDE

20. Press **WELT** upward and slip-stitch ends to **FRONT**.

21. Use View A pad of Vogue Pattern 7503 (shoulder pads).

### B - FACINGS - HEMS

1. Machine-stitch and slash **FRONT FACING** same as **INTERFACING**.
2. Seam **BACK FACINGS** at center back, matching  $\nabla$  and to **FRONT FACING**, matching  $\nabla$ , clipping shoulder seam at curve.
3. Seam facings to coat, matching center back-- $\square$  large  $\circ$  and  $\nabla$ . Trim, turn and press.
4. Try on coat, adjust length and turn up hem on sleeves and lower edge, opening facing.
5. **WHEN COAT IS TO BE LINED:**-Catch-stitch hems to sleeves and lower edge, easing lower hem.
6. Catch-stitch facings to coat, oversew facing to hem.
7. **WHEN UNLINED:**-Turn under and stitch edge of hem and hem to sleeves and lower edge of coat, easing hem.
8. Finish facings the same.
9. If stitching is used on **WELT**, edge-stitch neck, fronts and sleeves and run 3 rows inside 3/8" apart.

### C - LINING

1. Make released pleat at shoulder of **LINING FRONT** by meeting small  $\circ$  line to large  $\circ$  line and stitching them together inside. Press fold toward front edge.
2. Seam lining at underarm, matching  $\nabla$ .
3. Press lining and coat thoroughly.
4. Set lining into coat, pinning seams together. Baste armholes.
5. Sew side seams together loosely from underneath.
6. Turn in and hem lining down front against facing.
7. Baste front lining over shoulder. Hem back over it, easing back.
8. Lay soft pleat at center back by bringing small  $\circ$  line on one side to meet same line on other. Bar tack at neck and waist-line.
9. Turn in and hem lining over back neck seam.
10. Adjust and hem lining against hem, allowing ample length to prevent drawing.
11. Seam and press sleeve lining. Slip lining over sleeve and hem over armhole seam and against hem, allowing ample length to prevent drawing.