



GASP Archives Copyright 2024
McCall 7985 (1934) Size 16 Bust 34 Waist N/A Hip 37

PDF file 1/2:

- Envelope front/back
- One page instruction sheet printed both sides

PDF file 2/2:

- Fourteen printed pieces.

PDF file is A0 but may print A4 with Adobe tiling/poster instructions at 100%. File is left open for personal use with Adobe Illustrator/InkScape or similar.

IMPORTANT $\frac{3}{8}$ inch is allowed on all seam-edges. All seams are indicated by broken lines; all cutting lines by continuous double lines. A narrow margin surrounds each pattern piece, making it easier to cut accurately. **Cut pattern and material together through the white center of the double line. The margin falls away as you cut through pattern and material.** Every mark is important for the construction, so before removing the pattern from the material, mark carefully with tracing wheel, tailor's chalk or thread markings.

United States Patents Nos. 1,387,723 and 1,527,518. Foreign Patents and Pending United States and Foreign Applications. Copyright 1934, by The McCall Co.

MCCALL

PRINTED
PATTERN



GASP ARCHIVES - 1934

Ladies & Misses' Dress 25¢

7985

SIZE 16

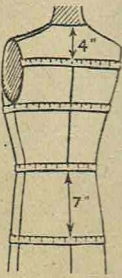
McCALL CUT AND SEW GUIDE

7985

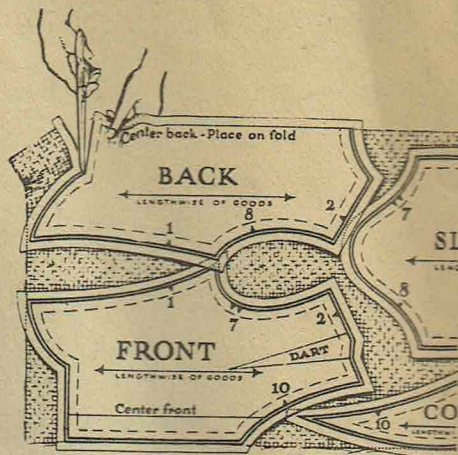
SIZE 16

STANDARD
BODY MEASUREMENTS
FOR THIS SIZE

BUST MEASURE 34
WAIST MEASURE . . . 28
HIP MEASURE 37
ACROSS BACK 14

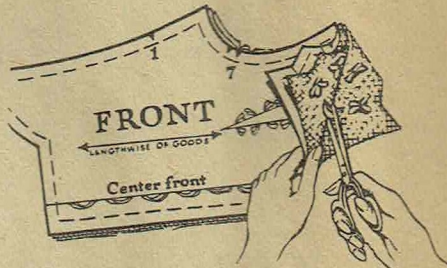


HOW TO CUT



Cut pattern and material through the white center of the double line. Do not cut off the margin before cutting material. The margin falls away as you cut through pattern and material.

HOW TO MAKE TAILOR'S TACKS



Make tailor's tacks before removing the pattern after garment is cut. With double thread, baste through pattern and both layers of material, forming loops. Clip each loop so as to be able to remove the pattern. Then raise the upper layer of the material slightly and clip through center of threads as illustrated. A tracing wheel may be used on hard cotton materials.

I. HOW TO ADJUST THIS PATTERN TO YOUR MEASUREMENTS

Before cutting, compare your measurements with the standard measurements for this size, and if necessary, adjust the pattern as shown below.

7985

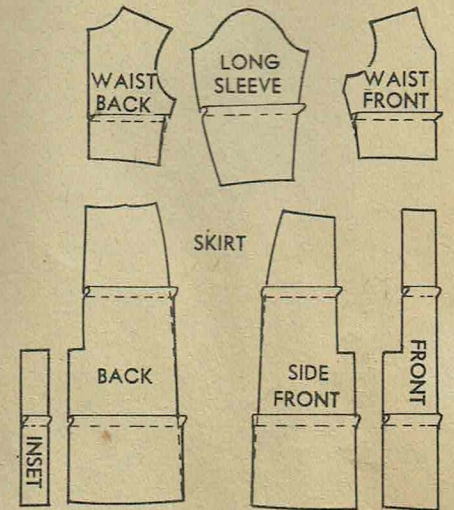
HOW TO SHORTEN OR LENGTHEN PATTERN

To shorten -- Make corresponding tucks across pattern above the waistline and below the hip as illustrated.

To lengthen -- Slash and spread in the same places.

FOR SLEEVE

Shorten or lengthen pattern at elbow.



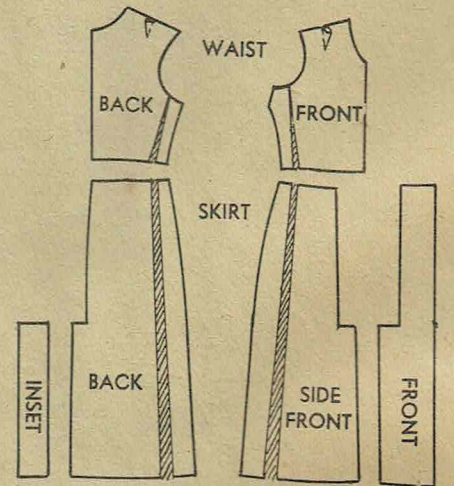
FOR LARGER HIP

Slash pattern from lower edge to armhole near underarm seam, and spread necessary amount at hip.

For comfortable fit -- The pattern should measure about $\frac{1}{2}$ " more than the hip measure.

FOR NARROW SHOULDERS

Reduce width of pattern at shoulder by making a short tuck in front and back.



- I How to adjust this pattern to your measurements
- II Cutting layouts for this size
- III Assembling and sewing guide
- IV Finishing details

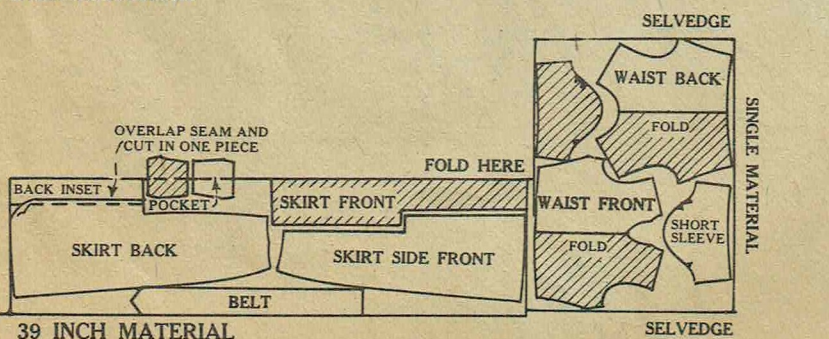
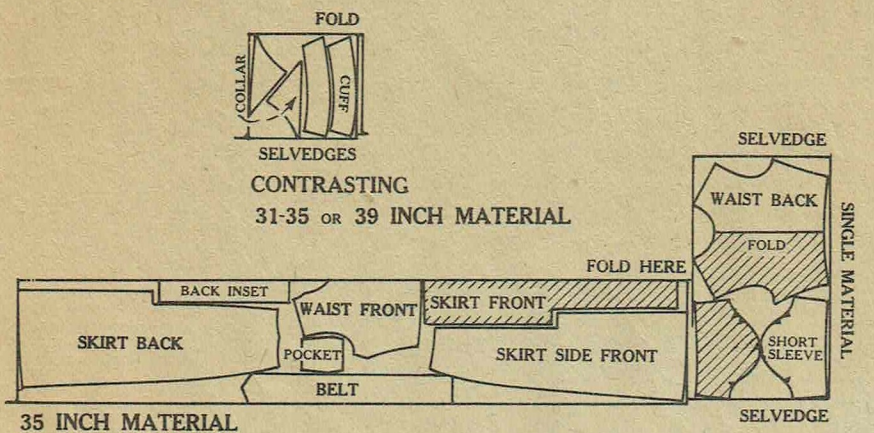
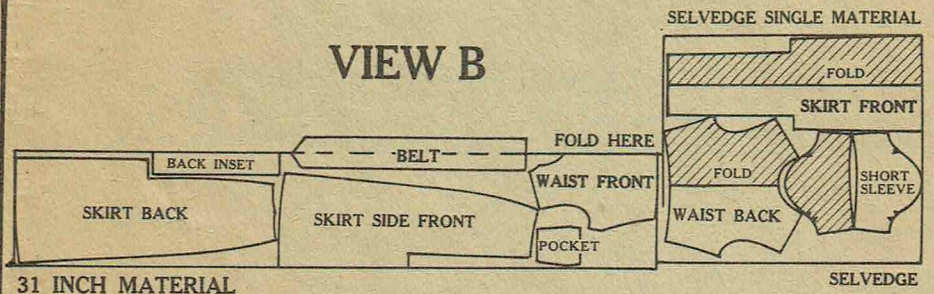
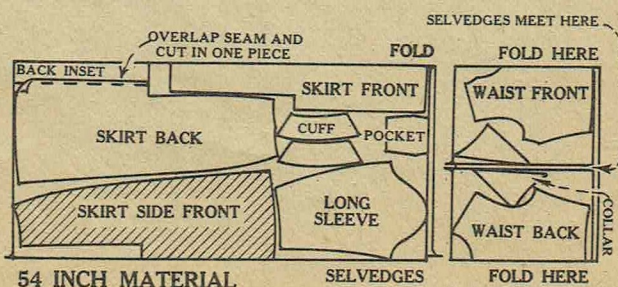
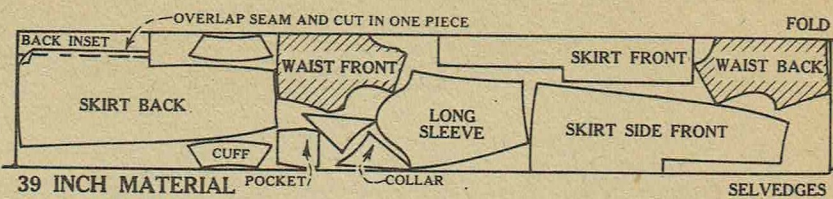
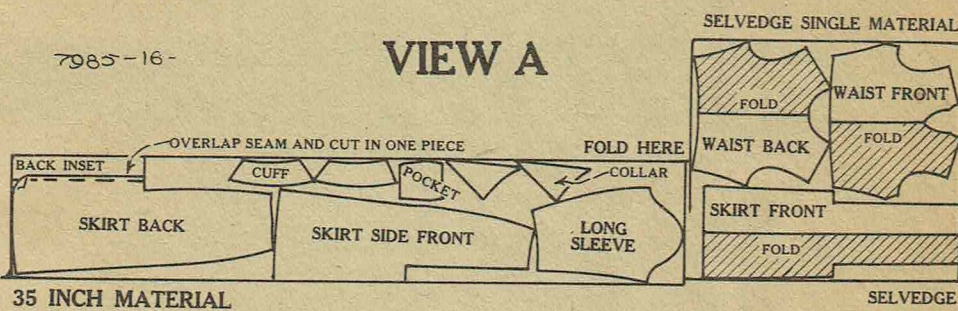
- I Comment adapter le patron à vos mesures.
- II Comment il vous faut disposer le patron pour tailler ce modèle.
- III Guide pour l'assemblage et la confection du vêtement.
- IV Finissage des détails.

- I Cómo se ajusta este patrón a sus medidas.
- II Divisiones para el corte de este tamaño
- III Confección y guía para la costura
- IV Detalles para el acabado

II. CUTTING LAYOUT FOR THIS SIZE

The diagrams below show how to lay the pattern pieces on the material. Pin the pattern pieces on material and cut* pattern and material together through the white center of the double line. The margin falls away as you cut through pattern and material. *See diagram above on "How to Cut."

IMPORTANT — The pattern pieces, shaded in the diagrams, are to be laid face down.



III. ASSEMBLING AND SEWING GUIDE

Join the seams by matching the corresponding notches. The notches in the pattern are numbered in the order in which the seams should be joined.

7985

WAIST BACK
SKIRT BACK
SKIRT SIDE FRONT
SKIRT FRONT
WAIST FRONT
COLLAR
POCKET
BACK INSET
INSIDE
INSIDE
WAIST BACK
LONG SLEEVE
CUFF
SHORT SLEEVE
CUFF
KERCHIEF

1. Make side darts in waist front and join underarm seams.

2. Sew skirt front to side front sections, forming pleats and stitching on line indicated. Make lapped seams above pleats (see finishing details).

3. Sew skirt front to side front sections, forming pleats and stitching on line indicated. Make lapped seams above pleats (see finishing details).

4. Join center back seam of skirt; then form pleat and sew to inset, stitching on line indicated.

5. Join center back seam of skirt; then form pleat and sew to inset, stitching on line indicated.

6. Make darts in skirt back and join side seams.

7. Sew skirt to waist, easing in fullness of waist.

8. Face collar sections, leaving notched edges free; then sew to front neckedge with seam binding.

9. Finish back neckedge with bias underfacing (see finishing details).

10. Gather back edge between crosses and join seam.

11. Face cuff, leaving notched edges free; then sew to sleeve with seam binding.

12. Face cuff, leaving notched edges free; then sew to sleeve with seam binding.

13. Join sleeve seam.

14. Join seam of cuff and face; then sew to sleeve with seam binding.

15. Join seam of cuff and face; then sew to sleeve with seam binding.

16. Sew either style of sleeve into armhole (see finishing details).

17. Sew either style of sleeve into armhole (see finishing details).

IV. FINISHING DETAILS

SEAM FINISHINGS

A and B - PLAIN SEAM OVERCAST - Press seam open and overcast each edge, or overcast both edges together.

C - PLAIN SEAM WITH TURNED EDGES - Press seam open. Turn under each edge and sew with running stitches.

D - PLAIN SEAM PINKED - Pink both edges by hand or machine and press open. (Suitable for cloth or velvet)

HOW TO MAKE A BOUND BUTTONHOLE

A - Stitch binding to position, right sides together.

B - Slash through center and diagonally to corners. Draw binding to wrong side and baste.

C - Shows wrong side of buttonhole.

D - Baste facing to wrong side of buttonhole.

E - Slash facing and hem to buttonhole, as illustrated.

F - Shows right side of bound buttonhole.

HOW TO MAKE A LAPPED SEAM

Turn under one edge on seam allowance; then place over the other edge and stitch.

HOW TO FINISH HEM

A - PLAIN HEM - Turn under edge of hem and stitch close to turned edge. Slip-stitch hem to garment.

B - HEM WITH BINDING - Stitch binding flat to edge of hem, then slip-stitch free edge of binding to garment. For circular lower edge, draw up hem to fit, using gathering thread or small darts before sewing binding to hem.

HOW TO FINISH SIDE OPENING WITH UNDERLAP

A - Sew hooks on front edge of opening, then cover sewed on part of hooks with an underfacing.

B - For underlap, cut a strip 2 1/2" wide, then sew one edge to back edge of opening. Fold through center and hem free edge to position. Sew upper and lower ends to underfacing.

C - Sew eyes on underlap, as illustrated.

HOW TO MAKE A NARROW HEM

WRONG SIDE

For thin or sheer material - First turn under half of seam width and crease; then turn under on seam allowance and hem.

BINDING

WRONG SIDE

For heavier material -- Stitch one edge of seam binding 1/4" from edge of material on right side; then turn material on seam allowance and hem binding.

HOW TO MAKE BIAS UNDERFACING

Sew underfacing to edge of garment, then turn to inside and make running stitches, tacking occasionally to garment, as illustrated. For curved edge shape underfacing to fit.

HOW TO SEW SLEEVE INTO ARMHOLE

A - Pin sleeve to armhole, notches matching. Ease in fullness at top.

B - Baste sleeve into armhole with running stitch, removing pins as you baste, then stitch.