



GASP Archives - Copyright 2024
Vogue Pattern 8082 (1940's)

PDF file 1/2:

- Envelope front/back .

One page instructions printed both sides.

PDF file 2/2:

- Nine unprinted pieces

A0 and larger but may print as A4 with Adobe tiling/poster instructions,
file is left open for personal use with Adobe Illustrator/InkScape or similar.
Not for resale.

NO. 8082-60c

42 BUST 45 HIP

VOGUE PATTERN



GASP ARCHIVES - 1940'S

NO. 8082

PRICE 60c

9 PIECES IN THIS PATTERN
CUT IN SIZES 14—16—18—20—40—42
8082—ONE-PIECE FROCK

Shaped collar and tie ends are cut in one and are optional. Sleeves set into pointed armholes may be long with tied cuffs or very short. Skirt is slightly flared at front, and cut in one with front and back blouse panels.

| YARDAGE | 14 | 16 | 18 | 20 | 40 | 42 |
|---------|----|----|----|----|----|----|
|---------|----|----|----|----|----|----|

VIEW A

| | | | | | | |
|--------------|-----------------|-----------------|-----------------|-----------------|-----------------|-----------------|
| With Nap 35" | 4 | 4 $\frac{1}{8}$ | 4 $\frac{5}{8}$ | 4 $\frac{5}{8}$ | 4 $\frac{7}{8}$ | 5 |
| With Nap 39" | 3 $\frac{3}{4}$ | 3 $\frac{7}{8}$ | 3 $\frac{7}{8}$ | 3 $\frac{7}{8}$ | 4 $\frac{1}{8}$ | 4 $\frac{1}{4}$ |
| With Nap 54" | 2 $\frac{3}{4}$ | 2 $\frac{7}{8}$ | 2 $\frac{7}{8}$ | 2 $\frac{7}{8}$ | 3 $\frac{1}{8}$ | 3 $\frac{1}{2}$ |

VIEW B

| | | | | | | |
|-----------------|-----------------|-----------------|-----------------|-----------------|-----------------|-----------------|
| Without Nap 35" | 3 | 3 $\frac{1}{8}$ | 3 $\frac{1}{8}$ | 3 $\frac{1}{8}$ | 3 $\frac{1}{2}$ | 3 $\frac{1}{2}$ |
| Without Nap 39" | 2 $\frac{5}{8}$ | 2 $\frac{5}{8}$ | 2 $\frac{3}{4}$ | 2 $\frac{7}{8}$ | 3 $\frac{1}{8}$ | 3 $\frac{1}{4}$ |

Belt Interfacing

| | | | | | | |
|------------|---------------|---------------|---------------|---------------|---------------|---------------|
| 24" Canvas | $\frac{1}{4}$ | $\frac{1}{4}$ | $\frac{1}{4}$ | $\frac{1}{4}$ | $\frac{1}{4}$ | $\frac{1}{4}$ |
|------------|---------------|---------------|---------------|---------------|---------------|---------------|

9" Slide fastener

| | | | | | | |
|--|----|----|----|----|----|----|
| Length of frock at centre-back from natural neck-line (inches) | 44 | 45 | 46 | 46 | 46 | 46 |
|--|----|----|----|----|----|----|

Width at lower edge of frock in size 16 is about 1 $\frac{5}{8}$ yards.

3" Hem allowed.

Shoulder pad: $\frac{1}{8}$ yard of cotton wadding and $\frac{1}{4}$ yard of 35" or 39" material for facing.

If the cotton or linen fabric used is Sanforized-shrunk, no allowance for shrinkage need be made.

Yardage does not allow for matching squares when a plaid fabric is used.

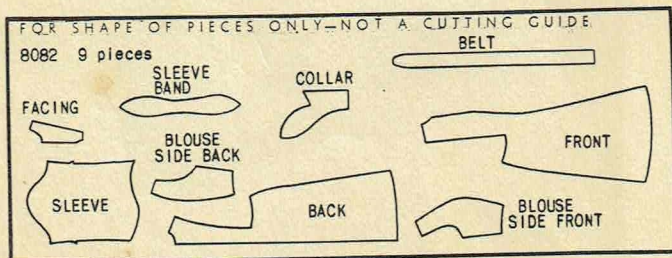
SUITABLE MATERIALS—PLAIN OR PRINTED:

View A and B:
Silk crêpe
Satin
Novelty silk crêpe
Heavy sheer crêpe

View A also in:
Velveteen
Transparent velvet
Flannel
Wool jersey
Sheer woollen

Soft woollen
Novelty woollen
View B also in:
Linen
Piqué

Novelty cotton
Cotton lace
Cotton print
Shantung
Rayons



VOGUE PATTERN SERVICE

THE CONDÉ NAST PUBLICATIONS, INC. • GRAYBAR BLDG. • NEW YORK

© C. N. P. INC.

PRINTED IN U. S. A.

GASP ARCHIVES - 1940's

THE NEWEST FASHIONS ARE SHOWN IN
VOGUE PATTERN BOOK—NOW ON SALE

PLEASE READ ALL INSTRUCTIONS CAREFULLY BEFORE YOU CUT

Vogue Pattern No. 8082

© Vogue

SUGGESTIONS FOR HANDLING MATERIALS

SHRINKING: Be sure that woollens and washables are properly shrunk before cutting.

SAGGING-BIAS SEAMS: Various materials sag differently when cut bias or circular. Bias seams must be handled carefully. Keep sewing machine tension loose and the stitch fairly long.

STANDARD MEASUREMENTS

| | | | | | | | | | | | |
|-----------------|----|----|----|----|----|----|----|-----|----|----|----|
| Misses' & Sizes | 12 | 14 | 16 | 18 | 20 | 40 | 42 | 44 | 46 | 48 | 50 |
| Women's | 30 | 32 | 34 | 36 | 38 | — | — | — | — | — | — |
| Bust | 30 | 32 | 34 | 36 | 38 | 40 | 42 | 44 | 46 | 48 | 50 |
| Waist | 25 | 27 | 28 | 30 | 32 | 34 | 36 | 38 | 40 | 42 | 44 |
| Hips | 33 | 35 | 37 | 39 | 41 | 43 | 45 | 47½ | 50 | 53 | 56 |

(About 7" below normal waistline)

| | | | | |
|---------------------------------------|-----|----|-----|----|
| JUNIOR MISSES' Sizes | 11 | 13 | 15 | 17 |
| Bust | 29 | 31 | 33 | 35 |
| Waist | 25½ | 26 | 27½ | 29 |
| Hip (About 7" below normal waistline) | 32 | 34 | 36 | 38 |

See pattern envelope for yardages and measurements not shown in this chart.

ALTERATIONS

8082

Before placing pattern on material, pin pattern together. Fit or hold it up to the wearer, to find out how much alteration (if any) is needed.

- Shorten long Sleeve by pleating across pattern.
- For short Sleeve cut off pattern on line of large O.
- Shorten short Sleeve at lower edge.
- Shorten frock at lower edge or by pleating across pattern below armhole or below hip-line, as required.
- Lengthen at same places; cut and separate instead of pleating pattern.
- Even up shaped seam-lines when altering.
- For Neck B, trim Front and Facing 5/8" from small o finishing line.

PRACTICAL CUTTING AND MARKING INSTRUCTIONS

Discard pieces of pattern you do not intend to use. Place material on a hard flat surface. Compare pattern carefully with Picture Diagram on reverse side for straight of goods (o—o) perforations.

Before cutting, place pattern pieces on material exactly as shown in the cutting chart for your size and width of material.

When cutting chart shows material opened out and pattern is given for right side only, reverse the pattern for left side which is indicated on the chart by broken lines.

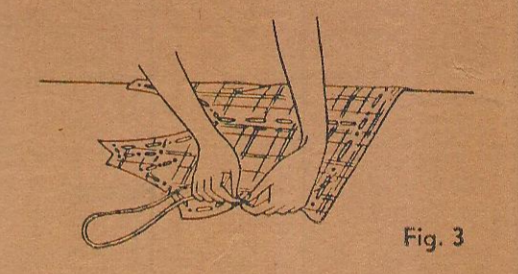
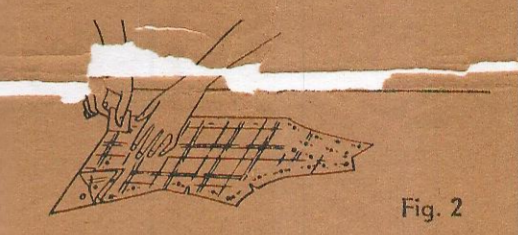
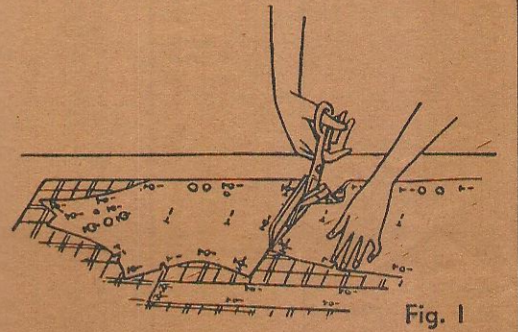
Pattern pieces are placed on right side of fabric except when on folded fabric.

(Fig. 1) Pin along seam lines and through all construction perforations, always consulting Picture Diagram of pattern. Pin corners accurately. Keep pins close enough to retain exact shapes of lines. Cut material, following edge of pattern and cut notches.

(Fig. 2) When material is double, mark with tailors' chalk through perforations on pattern. Mark other side at each pin.

For single thickness, do not mark through perforations—mark along pins on wrong side only.

(Fig. 3) Run marking threads along center front and back. Remove pattern and run thread line along chalk marks.



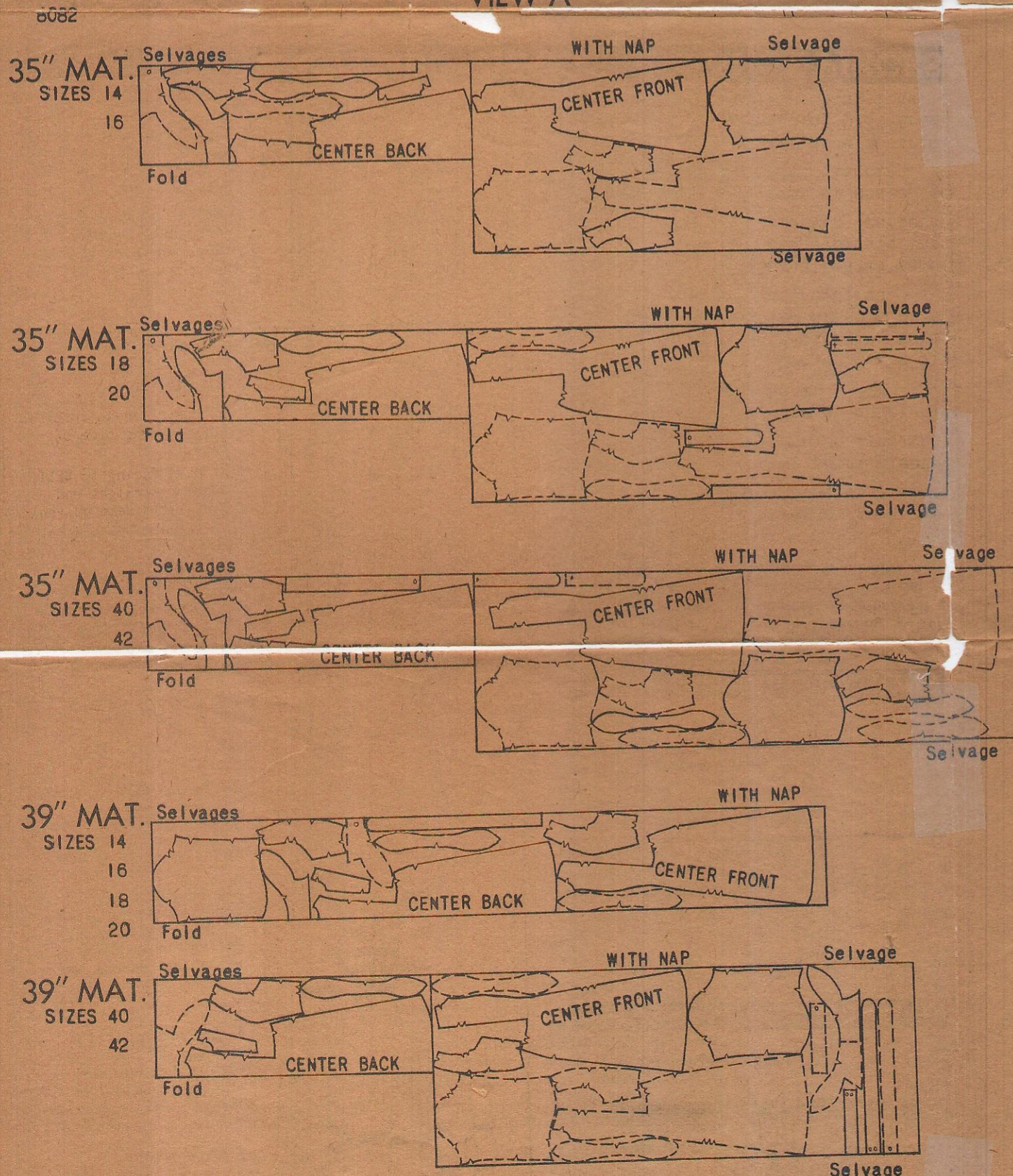
VOGUE'S BOOK OF SMART DRESSMAKING

A complete course in dressmaking—right on hand to be used when you need it. It explains everything you want to know about making clothes, from the cutting out to the finest finishing touches. Use it to help create clothes with an expert air of chic.

61 pages—368 illustrations
At your Pattern Counter
U. S. A. 25c Canada 25c England 1/-

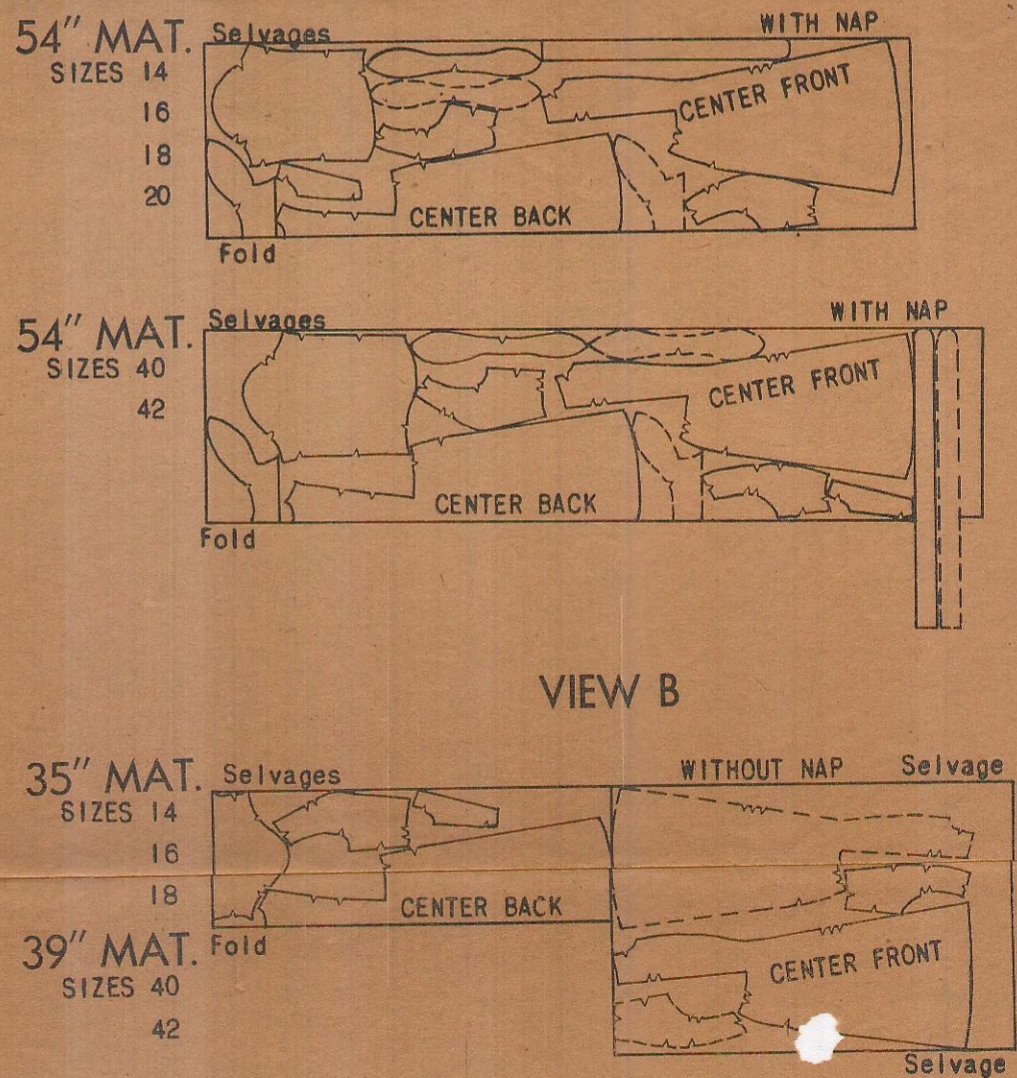
CUTTING CHARTS—ARRANGE PIECES AS SHOWN—ALL SEAMS ALLOWED

VIEW A

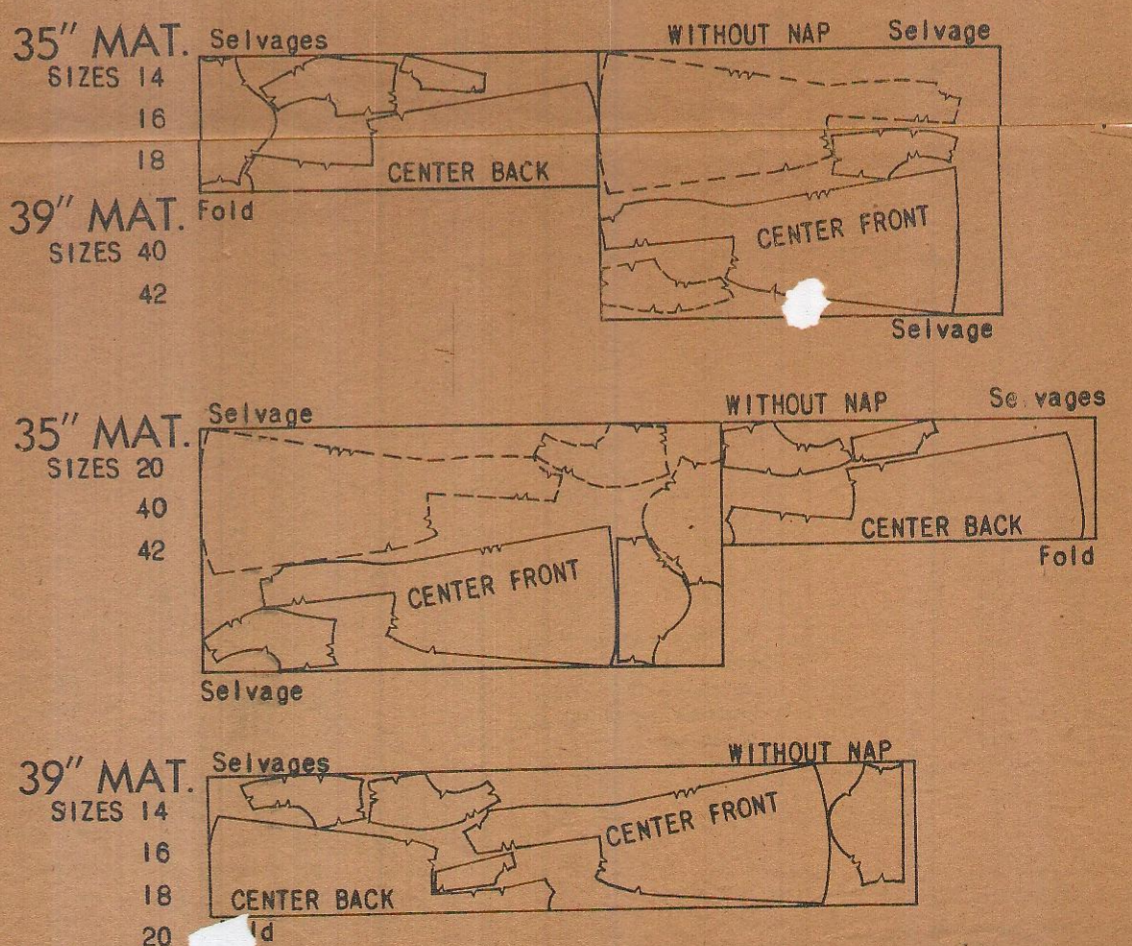


ALLOW FOR SEAMS WHEN PIECING COLLAR FACING AND BELT. MATCH CORRESPONDING SYMBOLS.

VIEW A



VIEW B



SEAM ALLOWANCE IMPORTANT

The seam allowance for all seams in this pattern is $\frac{1}{2}$ " indicated by small (o) perforations.

FOR CORRECT FIT—Full amount must be taken up on ALL SEAMS.

Also **STRETCH** and **EASE** edges as indicated. **EASE** means to FULL one side to the other.

Pin and baste all seams. Do not stitch until garment has been tried on and adjusted.

PRESSING

Press each section thoroughly as the work progresses — do not leave for one final pressing. Cover silk or wool with dry heavy press cloth. Dampen cloth evenly with sponge and press with rather hot iron.

Press velvet or velveteen over velvet board, touching iron lightly to fabric. Steam finished garment.

Press rayon same as silk but test a small piece first; dampness may spot it. Avoid placing a hot iron directly on the fabric as it will stick to the iron and shrivel.

SEAM FINISHINGS

Seams are illustrated unfinished to show notches.

1. Press plain seams open and sink.

2. Overcast.

3. or stitch under raw edges. On edge-stitched seams overcast edges finely together.

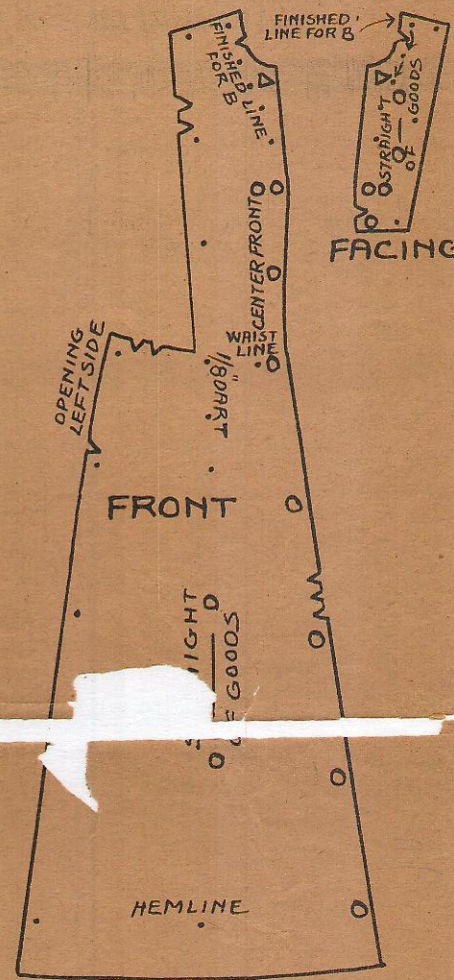
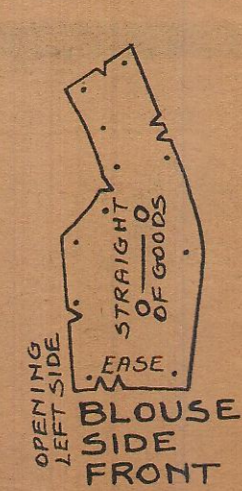
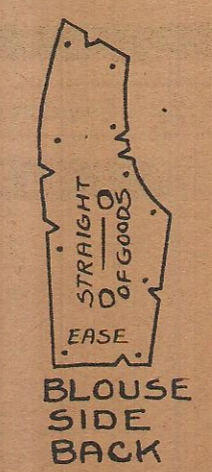
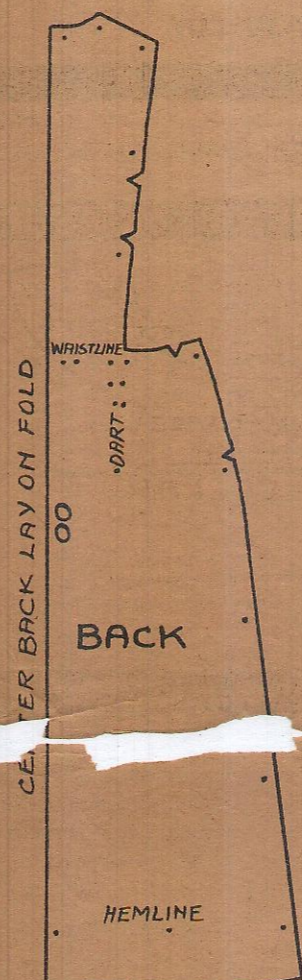
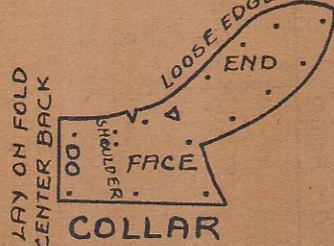
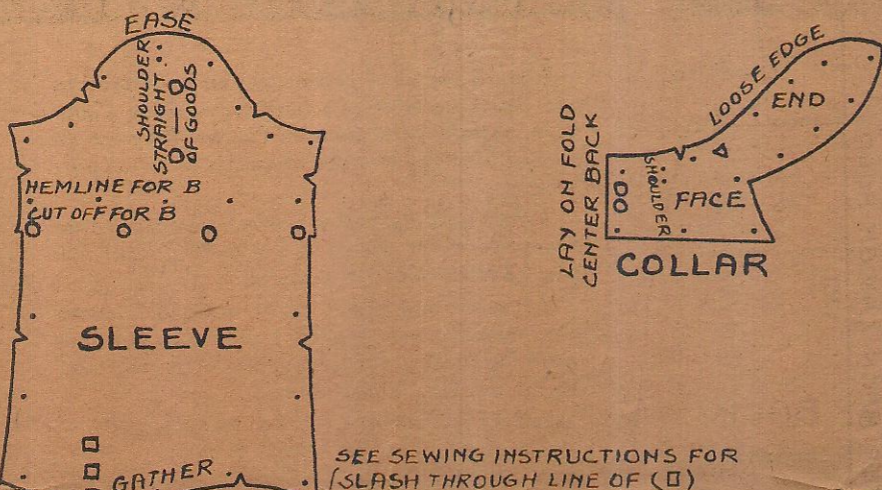
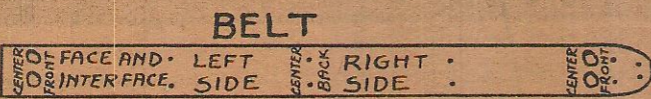
PICTURE DIAGRAM

This diagram identifies each piece of the tissue pattern. Compare carefully before cutting.

All seam lines indicated by small perforations (.)

Match corresponding notches (> or <) and perforations (□ or ▽). Large (○○) perforations indicate fold of material.

THIS PATTERN CONTAINS 9 PIECES

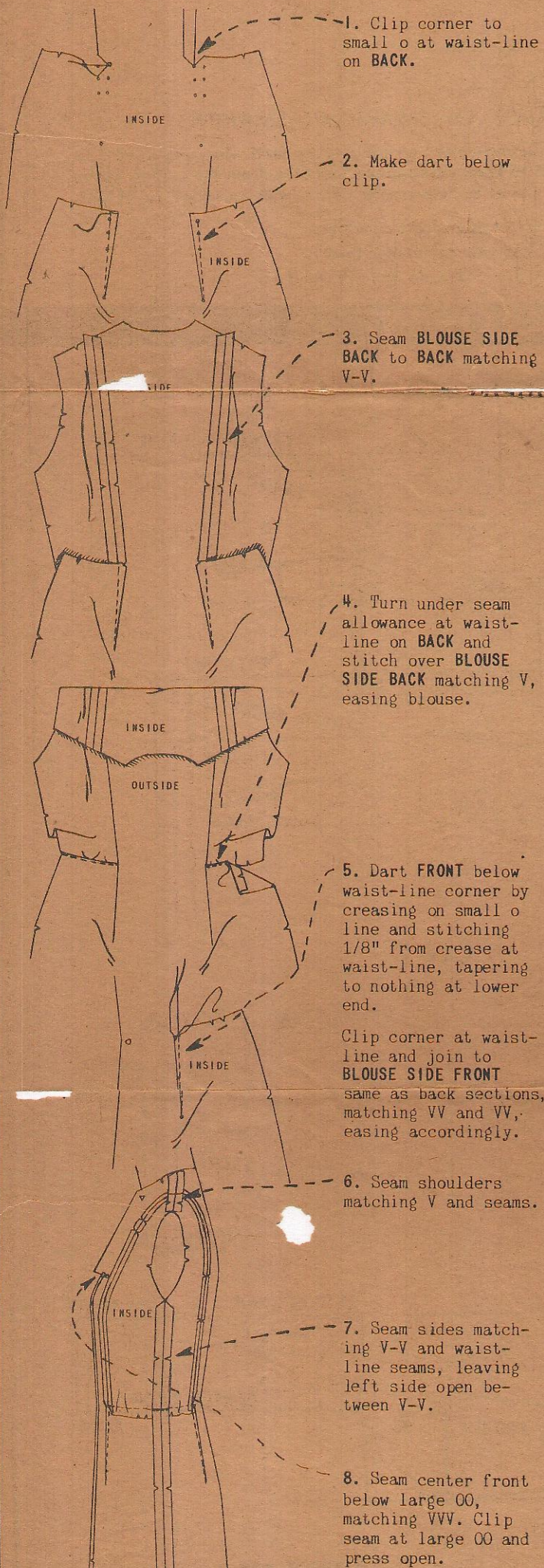


No. 8082

PRACTICAL SEWING INSTRUCTIONS

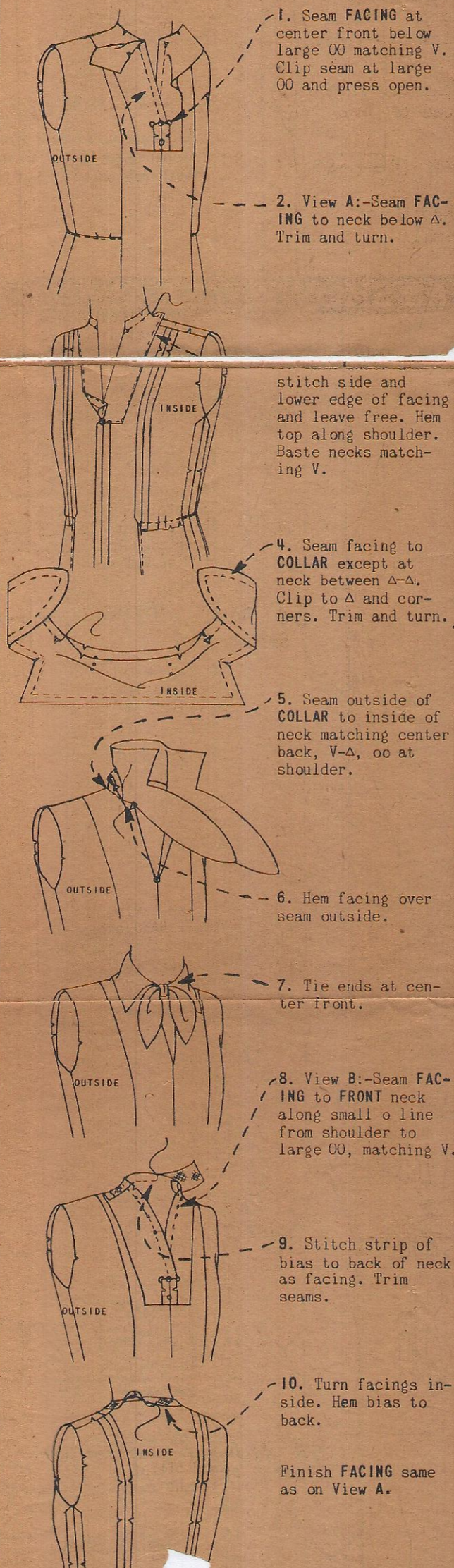
8082

A - SEAMS



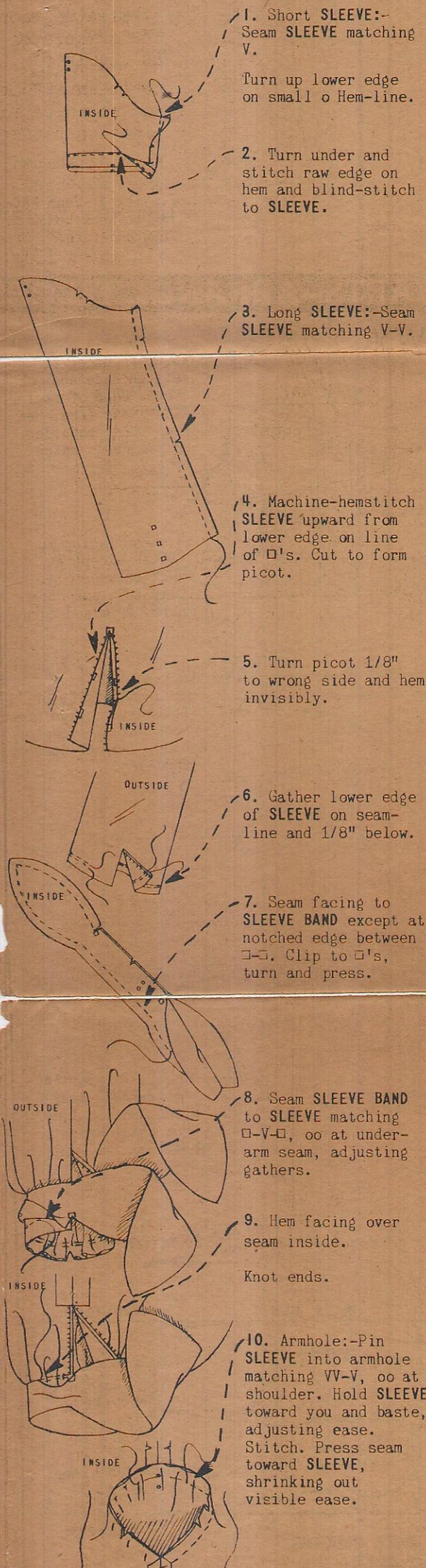
1. Clip corner to small o at waist-line on BACK.
2. Make dart below clip.
3. Seam BLOUSE SIDE BACK to BACK matching V-V.
4. Turn under seam allowance at waist-line on BACK and stitch over BLOUSE SIDE BACK matching V, easing blouse.
5. Dart FRONT below waist-line corner by creasing on small o line and stitching 1/8" from crease at waist-line, tapering to nothing at lower end.
6. Seam shoulders matching V and seams.
7. Seam sides matching V-V and waist-line seams, leaving left side open between V-V.
8. Seam center front below large OO, matching VV. Clip seam at large OO and press open.

B - NECK-LINE



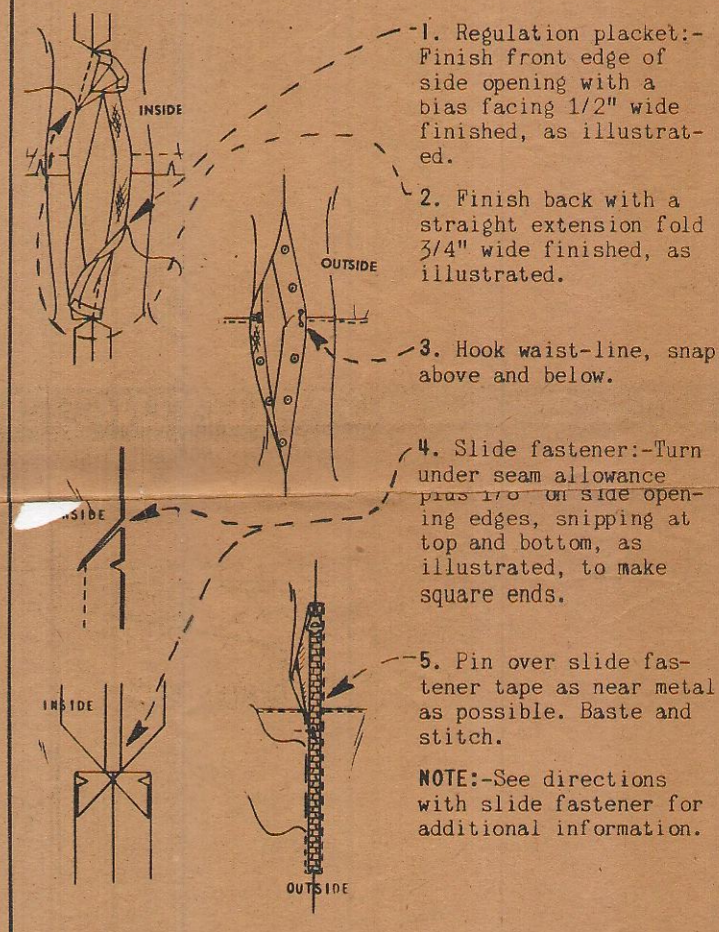
1. Seam FACING at center front below large OO matching V. Clip seam at large OO and press open.
 2. View A:—Seam FACING to neck below Δ. Trim and turn.
 4. Seam facing to COLLAR except at neck between Δ-Δ. Clip to Δ and corners. Trim and turn.
 5. Seam outside of COLLAR to inside of neck matching center back, V-Δ, oo at shoulder.
 6. Hem facing over seam outside.
 7. Tie ends at center front.
 8. View B:—Seam FACING to FRONT neck along small o line from shoulder to large OO, matching V.
 9. Stitch strip of bias to back of neck as facing. Trim seams.
 10. Turn facings inside. Hem bias to back.
- Finish FACING same as on View A.

C - SLEEVES



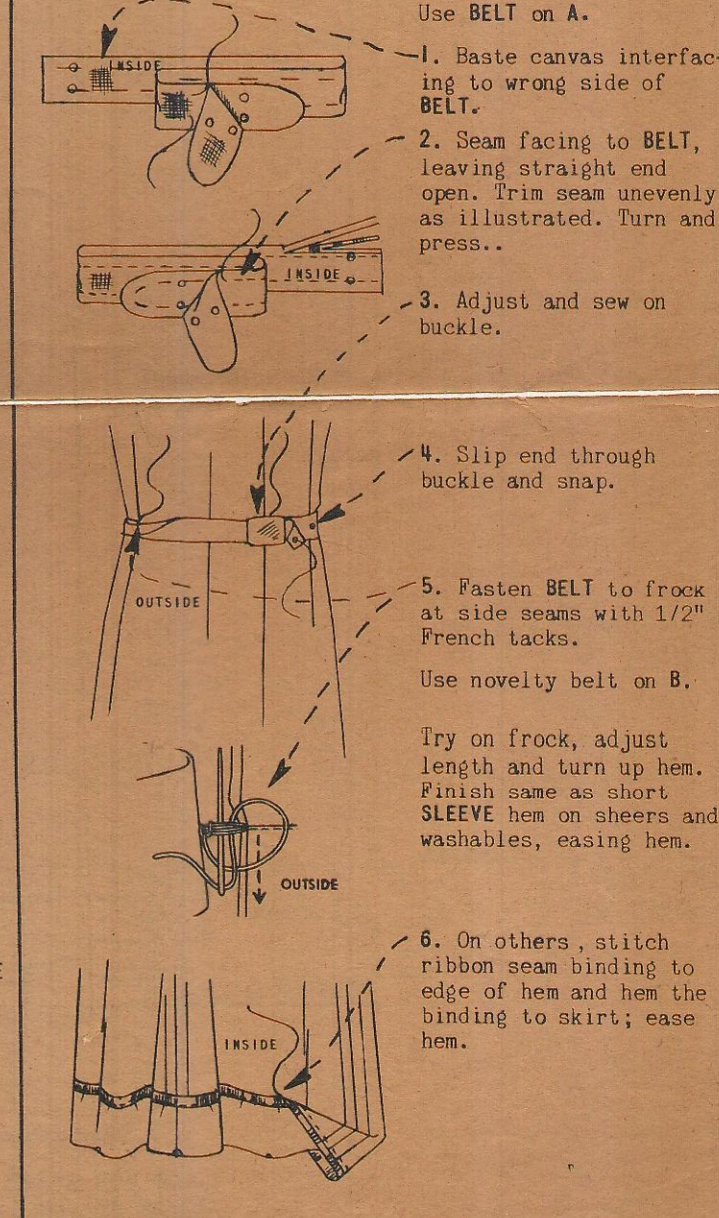
1. Short SLEEVE:—Seam SLEEVE matching V. Turn up lower edge on small o Hem-line.
2. Turn under and stitch raw edge on hem and blind-stitch to SLEEVE.
3. Long SLEEVE:—Seam SLEEVE matching V-V.
4. Machine-hemstitch SLEEVE upward from lower edge on line of □'s. Cut to form picot.
5. Turn picot 1/8" to wrong side and hem invisibly.
6. Gather lower edge of SLEEVE on seam-line and 1/8" below.
7. Seam facing to SLEEVE BAND except at notched edge between □-□. Clip to □'s, turn and press.
8. Seam SLEEVE BAND to SLEEVE matching V-V, oo at under-arm seam, adjusting gathers.
9. Hem facing over seam inside. Knot ends.
10. Armhole:—Pin SLEEVE into armhole matching VV-V, oo at shoulder. Hold SLEEVE toward you and baste, adjusting ease. Stitch. Press seam toward SLEEVE, shrinking out visible ease.

D - SIDE FASTENING



1. Regulation placket:—Finish front edge of side opening with a bias facing 1/2" wide finished, as illustrated.
 2. Finish back with a straight extension fold 3/4" wide finished, as illustrated.
 3. Hook waist-line, snap above and below.
 4. Slide fastener:—Turn under seam allowance plus 1/8" on side opening edges, snipping at top and bottom, as illustrated, to make square ends.
 5. Pin over slide fastener tape as near metal as possible. Baste and stitch.
- NOTE:—See directions with slide fastener for additional information.

E - BELT - HEM



- Use BELT on A.
1. Baste canvas interfacing to wrong side of BELT.
 2. Seam facing to BELT, leaving straight end open. Trim seam unevenly as illustrated. Turn and press.
 3. Adjust and sew on buckle.
- Use novelty belt on B.
4. Slip end through buckle and snap.
 5. Fasten BELT to frock at side seams with 1/2" French tacks.
- Try on frock, adjust length and turn up hem. Finish same as short SLEEVE hem on sheers and washables, easing hem.
6. On others, stitch ribbon seam binding to edge of hem and hem the binding to skirt; ease hem.